



RIVERSIDE ANALYTICS INC

OPEN HOUSE AND WEEKLY BROADCAST

DATE: JULY 21, 2020

RIVERSIDE ANALYTICS INC
Tim Koen, P. Eng, President
tim.koen@riversideanalyticsinc.com
www.riversideanalyticsinc.com

Follow us on Social Media!
Facebook - @RiversideAnalyticsInc
Twitter - @RiversideAnalyt

THIS IS OUR FINAL OPEN HOUSE FOR THE SUMMER!



RIVERSIDE'S LIVE WEEKLY BROADCAST

DISCLAIMER

- ❖ All trading / investing comes with risk.
- ❖ The insights contained in this presentation do not constitute advice, rather are meant for educational purposes from which you may make more educated decisions taking into account your individual risk profile and needs for return.
- ❖ At Riverside, we assess probabilities using systematic quantitative methodology. We do not provide advice. There are no guarantees for positive return. All investing/trading is at your own risk.
- ❖ Riverside is about helping active and affluent investors learn how to make better decisions in financial markets.
- ❖ All charts shown in this broadcast have been referenced from stockcharts.com, Amibroker or eSignal unless otherwise noted.

Good investing is not an “event” like finding the next growth opportunity or catching the next market turn. Rather, good investing is a disciplined process that converts research and training into a well-tested methodology, and then makes a habit of following that approach day after day.

John P. Hussman, Ph.D
President, Hussman Strategic Advisors



TONIGHT'S AGENDA

- ❖ **Process Thinking;**
- ❖ **The Current Facts in Hand;**
- ❖ **S&P 500 Projections;**
- ❖ **Technical Analysis (various tickers);**
- ❖ **Precious Metals and Miners;**
- ❖ **Product Offerings;**
- ❖ **Question and Answer Period;**

Tonight's Webinar is being recorded. The recording and slide deck and will be posted on the Riverside Website. Additional details to follow tonight's session.



LIVE MEMBER ONLY - ONLINE EVENT

HEAT MAP RADAR

SATURDAY JULY 25, 2020 - 11 TO 12:30PM E.T - WEBINAR DETAILS TO FOLLOW



ITEM'S TO BE DISCUSSED:

- Swing Detection Tracking (SDT);
- Inverse Fisher RSI;
- Heat Map Radar;
- Heat Map Advanced Ranking;
- Questions and Answers;

- Rank ALL ETF's
- Rank ALL ETF's by Sub Category
- Rank Preferred ETF's by Sub Category
- ETF Main Category
- ETF Sub Category
- ETF Sub Category Preferred ETF's Only

	TF Cross Above	PMT Diff	TR Diff	MMR Cross Above		TF Cross Above	PMT Diff	TR Diff	MMR Cross Below									
RADAR	60	15	20	60		RADAR	60	15	20	60								
RR ↑	TF ↑	PMT ↑	TR ↑	MMR ↑	Swing Up ↑	Inv_Fish (D) ↑	Inv_Fish (W) ↑				RR ↓	TF ↓	PMT ↓	TR ↓	MMR ↓	Swing Dn ↓	Inv_Fish (D) ↓	Inv_Fish (W) ↓

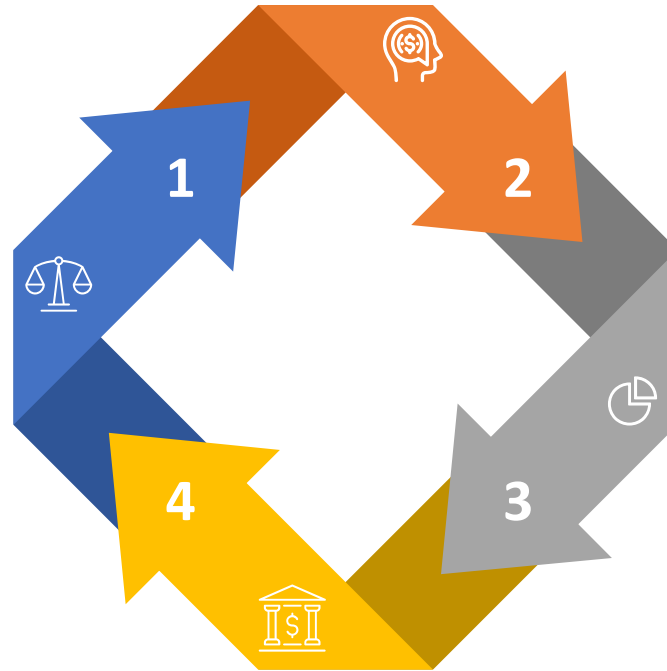


PROCESS THINKING

❖ OUR APPROACH

RIVERSIDE'S WEEKLY MARKET REVIEW PROCESS

FLOW CHART



THE WEIGHT OF THE EVIDENCE

Review the Weight of the Evidence each week with an un-biased and open mind.

DEVELOP A MARKET THESIS

Based on the Weight of Evidence, develop a Directional thesis on the Market (i.e Bullish, Neutral, Bearish)

REVIEW THE FACTS IN HAND

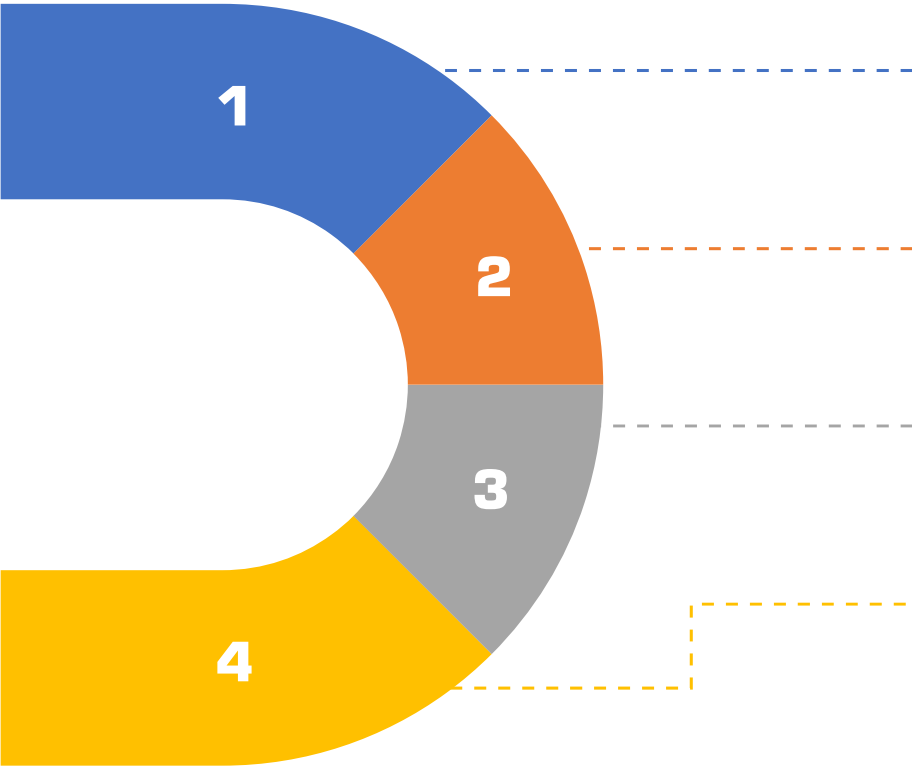
Do the current facts align with or contradict the current Market Thesis?

ALLOCATE ACCORDINGLY

Based on the current Market Thesis, allocate for the next week/month ahead.

THE WEIGHT OF THE EVIDENCE

RIVERSIDE'S TOOLS



HEAT MAP

Directed focus to strengthening or weakening assets

MARKET BREADTH

A look under the hood of the market

SEASONAL PROFIT EXPLORATION

A set of head lights illuminating the roadway ahead

HISTORICAL PRICE ANALYSIS

Aids in developing realistic market expectations





RIVERSIDE'S US GTAA ETF ANALYSIS DASHBOARD

MMR RANKING, VALUE, MOVEMENT DETECTION AND SEASONALITY

DATE: 2020-07-13

US GTAA ETF WEIGHT OF THE EVIDENCE SUMMARY

MARKET MODEL RANKING (MMR)

BEARISH NEUTRAL BULLISH



US GTAA ETF'S

US GTAA ETF VALUE CHART



NOTE: VALUE IS DETERMINED BY THE RATIO OF THE TICKER SYMBOLS OUTLINED BELOW VS THE THE TOTAL US MARKET ETF (VTI). THE POSITIONING OF THIS RATIO WITHIN A YEARL REGRESSION CHANNEL DEPICTS THE VALUE

US GTAA ETF

US GTAA ETF SEASONALITY SUMMARY

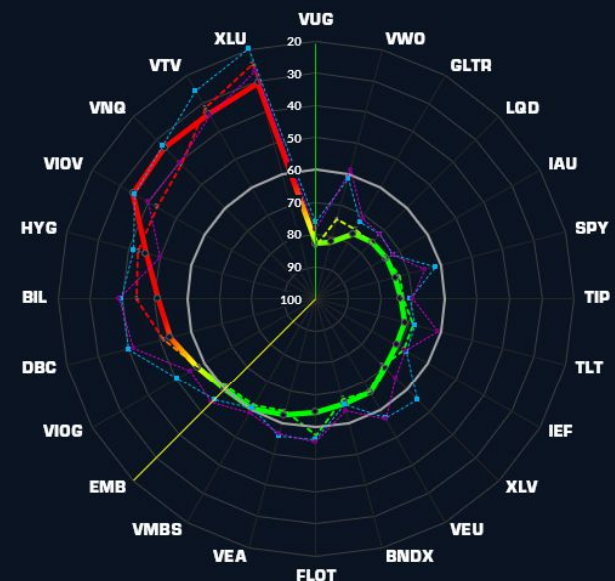
SEASONALITY CHART - JULY IN FOCUS



US GTAA ETF HEAT MAP RADAR

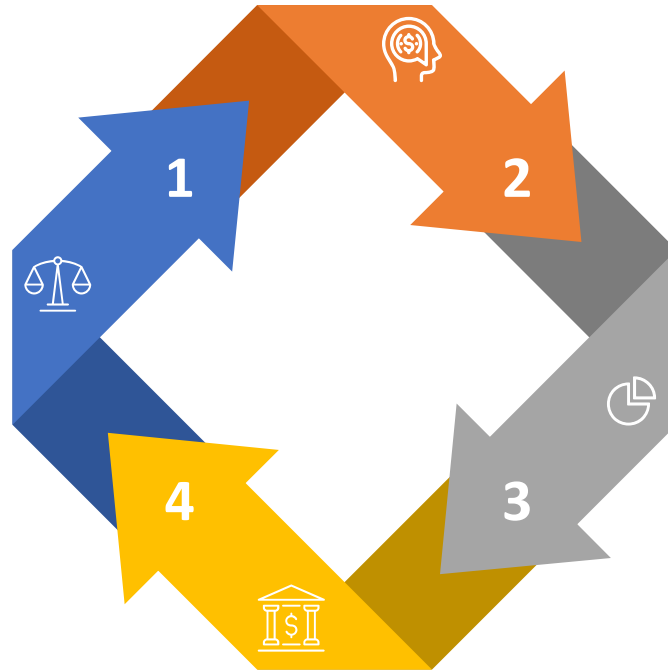
MARKET MODEL RANKING (MMR)

CURRENT MMR MMR_1 WEEK AGO MMR_2 WEEKS AGO MMR_3 WEEKS AGO



RIVERSIDE'S WEEKLY MARKET REVIEW PROCESS

FLOW CHART



THE WEIGHT OF THE EVIDENCE

Review the Weight of the Evidence each week with an un-biased and open mind.

REVIEW THE FACTS IN HAND

Do the current facts align with or contradict the current Market Thesis?

DEVELOP A MARKET THESIS

Based on the Weight of Evidence, develop a Directional thesis on the Market (i.e Bullish, Neutral, Bearish)

ALLOCATE ACCORDINGLY

Based on the current Market Thesis, allocate for the next week/month ahead.

OVERALL MARKET THESIS

WEIGHT OF THE EVIDENCE BASED

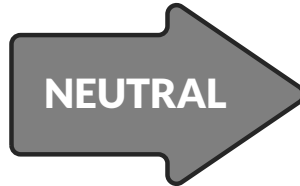


BULLISH MARKET THESIS

Anticipating higher prices in the days, week's months ahead. Looking for new opportunities, add to existing positions, managing existing positions, Increased Risk Exposure (within own risk tolerance)



**WEIGHT OF THE EVIDENCE
JULY 14, 2020**



NEUTRAL MARKET THESIS

Anticipating range bound price behavior in the days, week's months ahead. Looking for swing highs or tops of ranges to reduce risk exposure. Looking for swing lows or bottoms of ranges to increase risk exposure

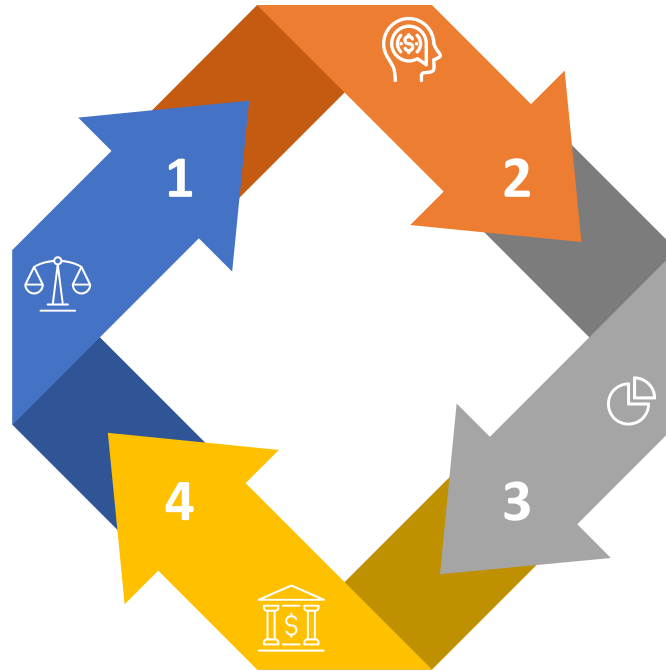


BEARISH MARKET THESIS

Anticipating lower prices in the days, week's months ahead. Not looking for new opportunities, not looking to add to existing positions, managing existing positions and Reduced Risk Exposure (within own risk tolerance)

RIVERSIDE'S WEEKLY MARKET REVIEW PROCESS

FLOW CHART



THE WEIGHT OF THE EVIDENCE

Review the Weight of the Evidence each week with an un-biased and open mind.

REVIEW THE FACTS IN HAND

Do the current facts align with or contradict the current Market Thesis?

DEVELOP A MARKET THESIS

Based on the Weight of Evidence, develop a Directional thesis on the Market (i.e Bullish, Neutral, Bearish)

ALLOCATE ACCORDINGLY

Based on the current Market Thesis, allocate for the next week/month ahead.

MECHANICAL ALLOCATION

SAMPLE PORTFOLIO STRATEGY

SIGNAL DATE: JUNE 30, 2020 → STRATEGY ALLOCATION FOR JULY 2020

PORTFOLIO SHIELD



ASSET CLASS	DEFENSIVE ALLOCATION	CONSERVATIVE ALLOCATION	OFFENSIVE ALLOCATION
Domestic Equities	25	30	35
Foreign Equities	12.5	15	17.5
Real Estate	5	7.5	12.5
Commodities	2.5	5	5
Bonds	55	42.5	30
TOTAL	100	100	100
Equity Bond Ratio	45 / 55	57.5 / 42.5	70 / 30
Offense Defense Ratio	37.5 / 62.5	45 / 55	52.5 / 47.5
Total Portfolio Equity	\$1,000,000		
Offensive Allocation	\$375,000	\$450,000	\$525,000
GEM (40%)	\$150,000	\$180,000	\$210,000
GTAA_Agg.6 (60%)	\$225,000	\$270,000	\$315,000
Defensive Allocation	\$625,000	\$550,000	\$475,000
DMFI	\$625,000	\$550,000	\$475,000

ALLOCATION FOR THE MONTH OF JULY 2020

❖ SAMPLE PORTFOLIO EQUITY = \$1,000,000

❖ SHIELD METRICS

❖ S&P 500 TREND = **BULLISH**

❖ S&P 500 BREADTH = **BULLISH**

❖ SHIELD POSTURE → **OFFENSIVE**

❖ **ALLOCATION** - Offense / Defense Ratio = 52.5 / 47.5 as per above

❖ The US Dollar is weaker than the CAD (longer term) therefore Hedged ETF's are shown;

❖ Total ETF'S Invested for JULY 2020 = 10 ETF'S

OFFENSIVE PORTFOLIO ALLOCATION

❖ GTAA_Agg.6 - Total Allocation (\$270,000 or 27%)

❖ US ETF'S - VUG, IAU, TLT, LQD, IEF, VWO

❖ CDN ETF'S - ZQQ-TC, CGL-TC, ZPL-TC, XIG-TC, HTH-TC, VEE-TC

❖ GEM signal - Total Allocation (\$180,000 or 18%)

❖ US ETF'S - SPY

❖ CDN ETF'S - XSP-TC

DEFENSIVE PORTFOLIO ALLOCATION

❖ Dual Momentum Fixed Income (DMFI) (\$625,000 or 62.5%)

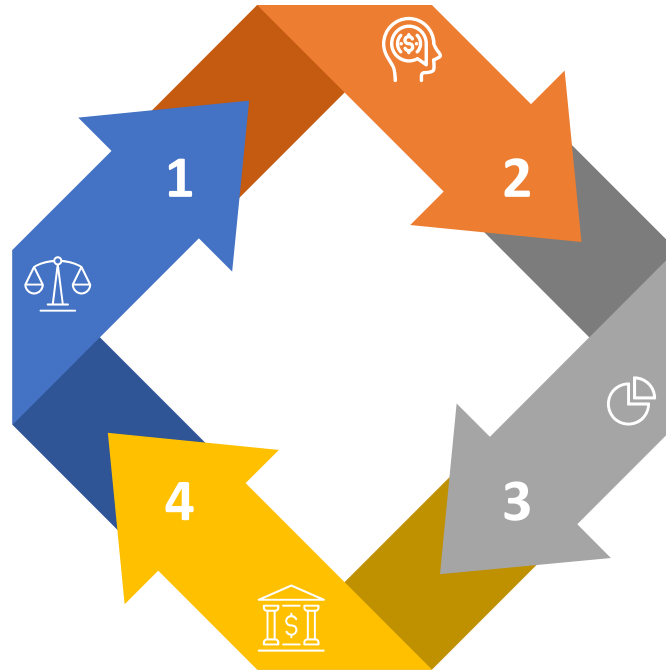
❖ US ETF'S - TLT, IEF, GLTR

❖ CDN ETF'S - ZPL-TC, HTH-TC, (1/2 CGL-TC, 1/2 SVR-TC)



RIVERSIDE'S WEEKLY MARKET REVIEW PROCESS

FLOW CHART



THE WEIGHT OF THE EVIDENCE

Review the Weight of the Evidence each week with an un-biased and open mind.

DEVELOP A MARKET THESIS

Based on the Weight of Evidence, develop a Directional thesis on the Market (i.e Bullish, Neutral, Bearish)

REVIEW THE FACTS IN HAND

Do the current facts align with or contradict the current Market Thesis?

ALLOCATE ACCORDINGLY

Based on the current Market Thesis, allocate for the next week/month ahead.



THE CURRENT FACTS IN HAND

❖ HEAT MAP DASHBOARD REVIEW

GLOBAL HEAT MAP DASHBOARD

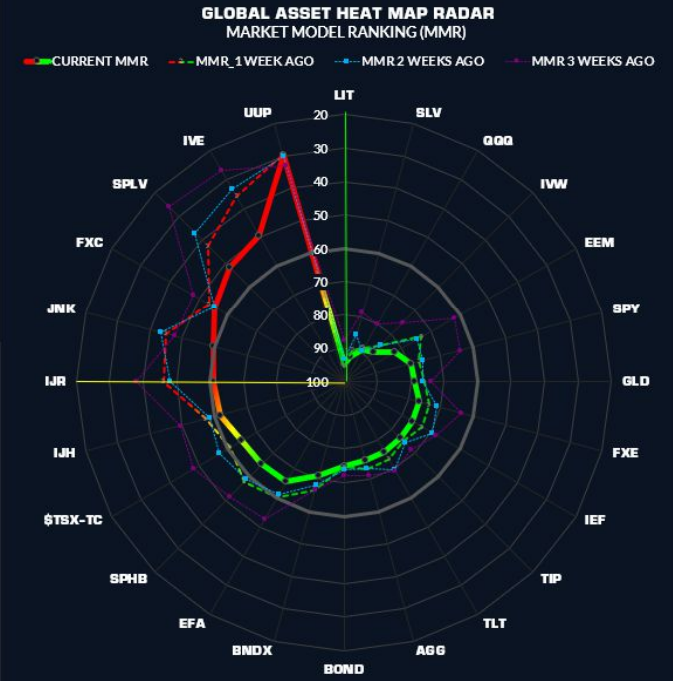
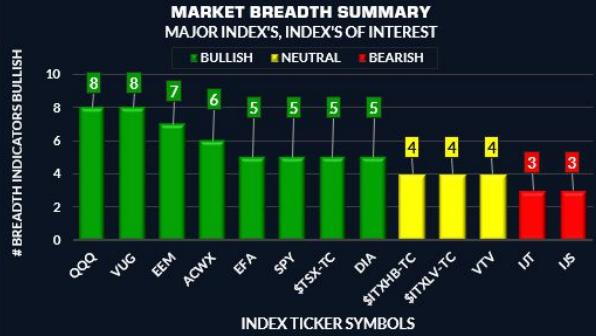
GENERAL OVERVIEW



RIVERSIDE'S GLOBAL MARKET ANALYSIS DASHBOARD

MMR, BREADTH, SEASONALITY, GTAA MOVEMENT DETECTION

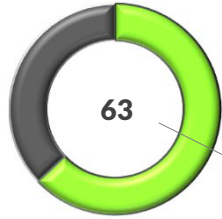
2020-07-20



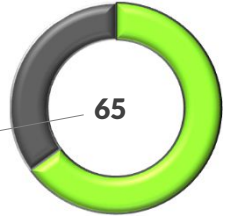
GLOBAL EQUITY MARKET ANALYSIS

MARKET MODEL RANKINGS (MMR)

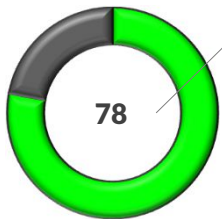
TSX (XIC-TC)



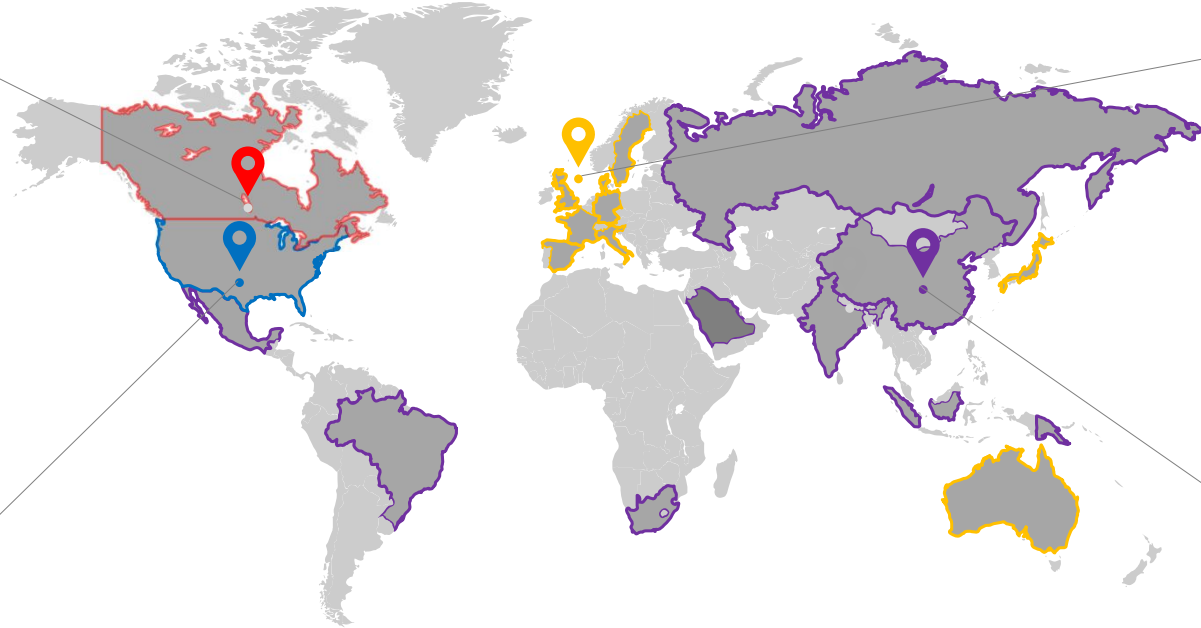
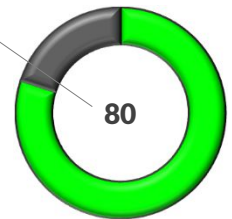
EAFE (EFA)



S&P 500 (SPY)



EMERGING (EEM)

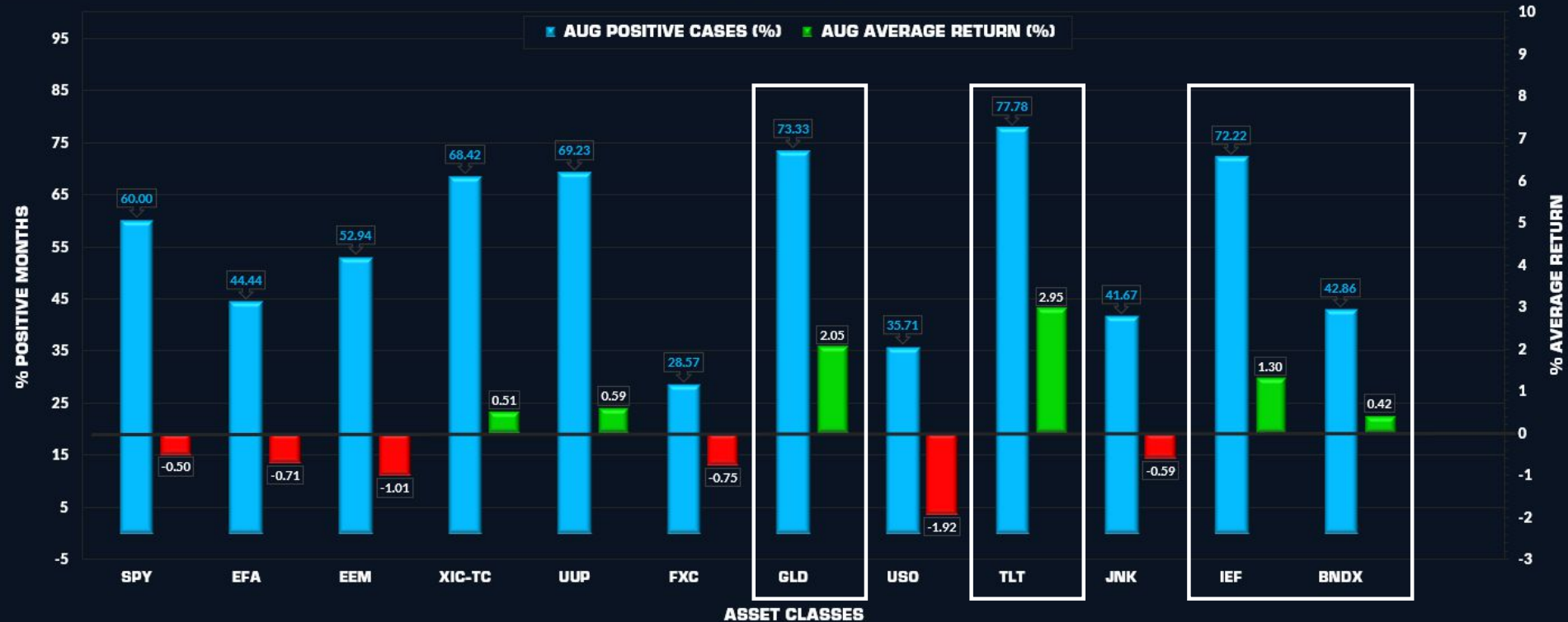


MAJOR GLOBAL ASSETS - SEASONAL TENDENCIES

MONTH OF AUGUST IN FOCUS



RIVERSIDE SEASONALITY EXPLORATION MAJOR GLOBAL ASSETS

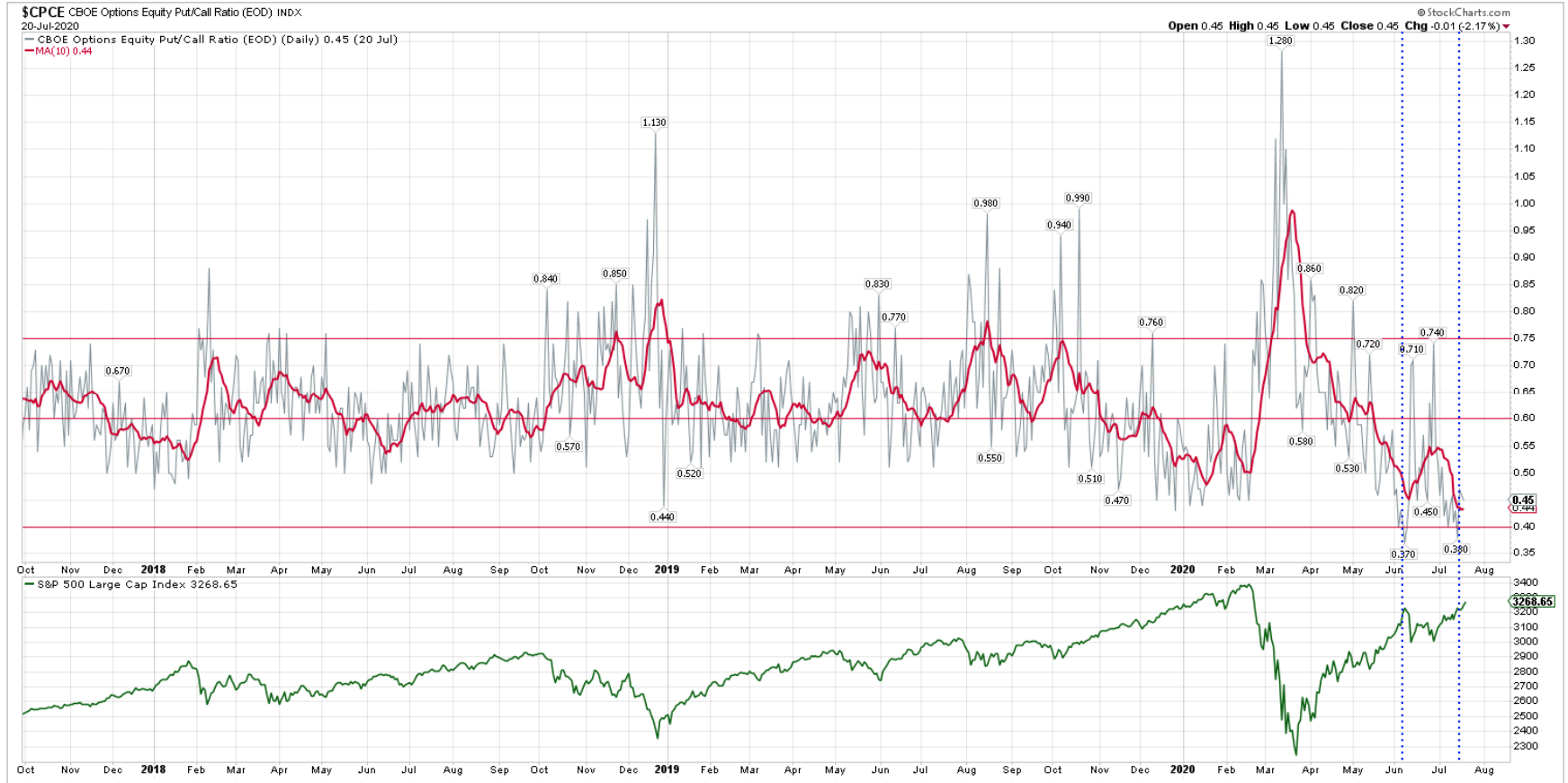




HISTORICAL PRICE ANALYSIS

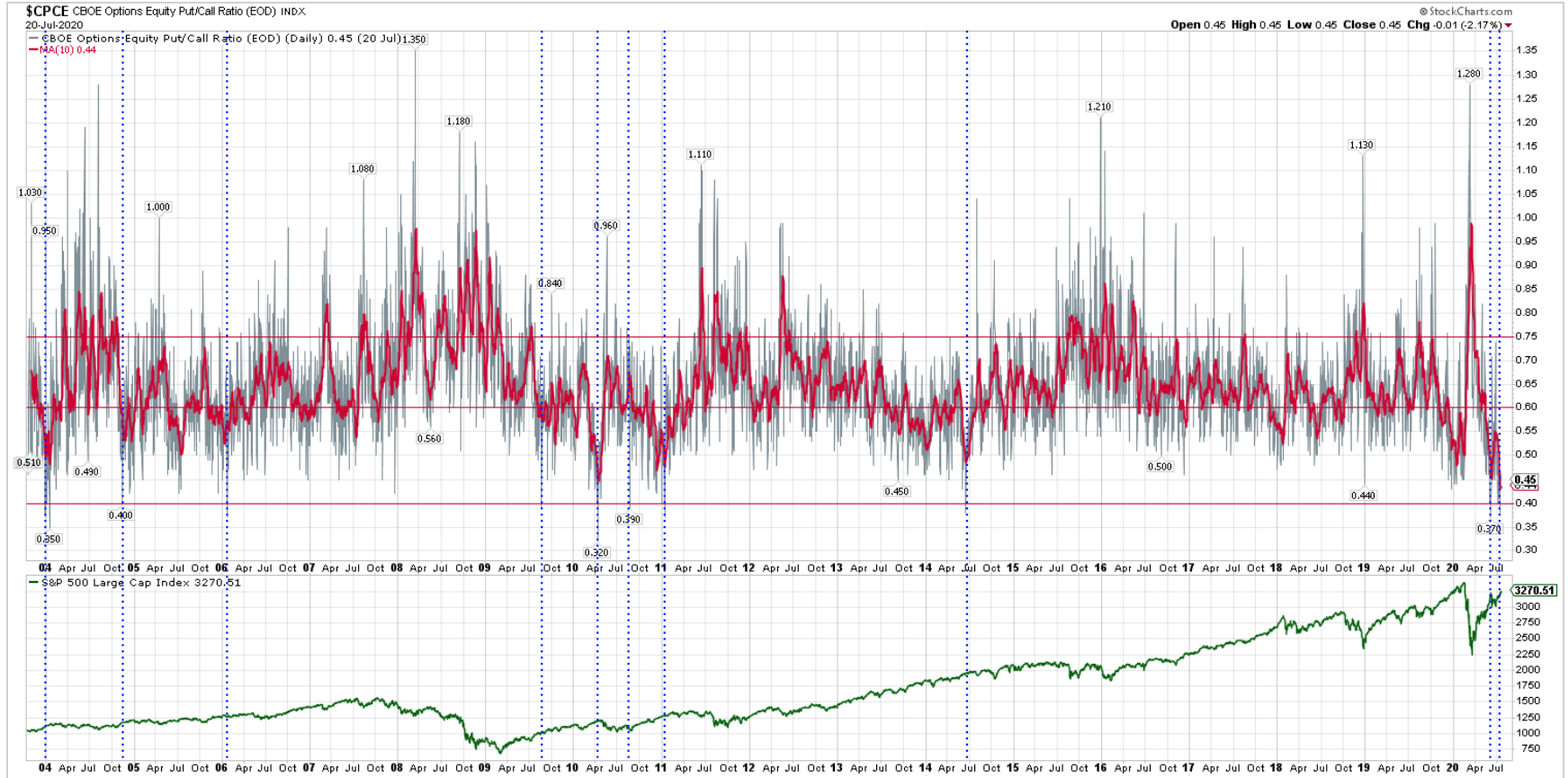
- ❖ CBOE EQUITY PUT/CALL RATIO (\$CPCE);
- ❖ S&P 500 % STOCKS ABOVE THE 200-DAY EMA;

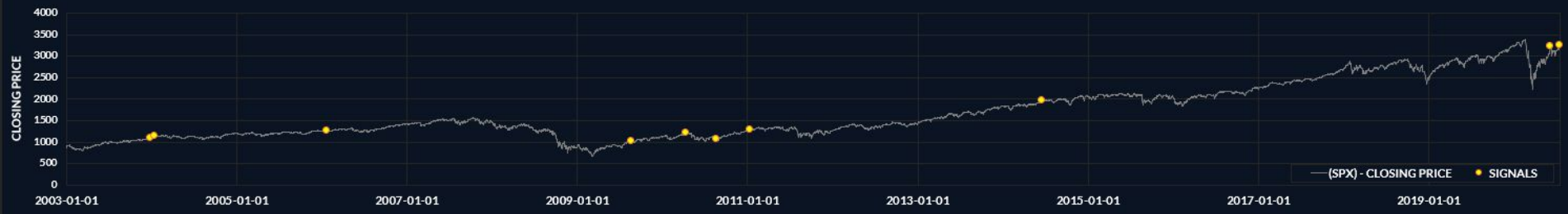
CBOE OPTIONS EQUITY PUT/CALL RATIO (\$CPCE) HISTORICAL PRICE ANALYSIS



CBOE OPTIONS EQUITY PUT/CALL RATIO (\$CPCE)

HISTORICAL PRICE ANALYSIS





PERCENT POSITIVE CASES
 1-DAY TO 1-YEAR FOLLOWING THE ORIGINAL SIGNAL



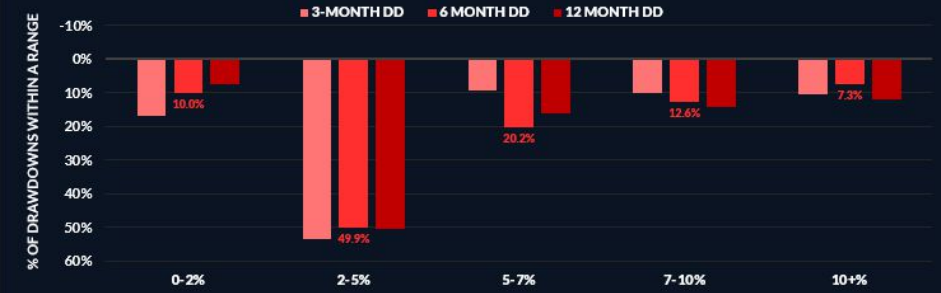
MIN / MAX RETURNS
 1-DAY TO 1-YEAR FOLLOWING THE ORIGINAL SIGNAL



AVERAGE RETURN ANALYSIS
 1-DAY TO 1-YEAR FOLLOWING THE ORIGINAL SIGNAL

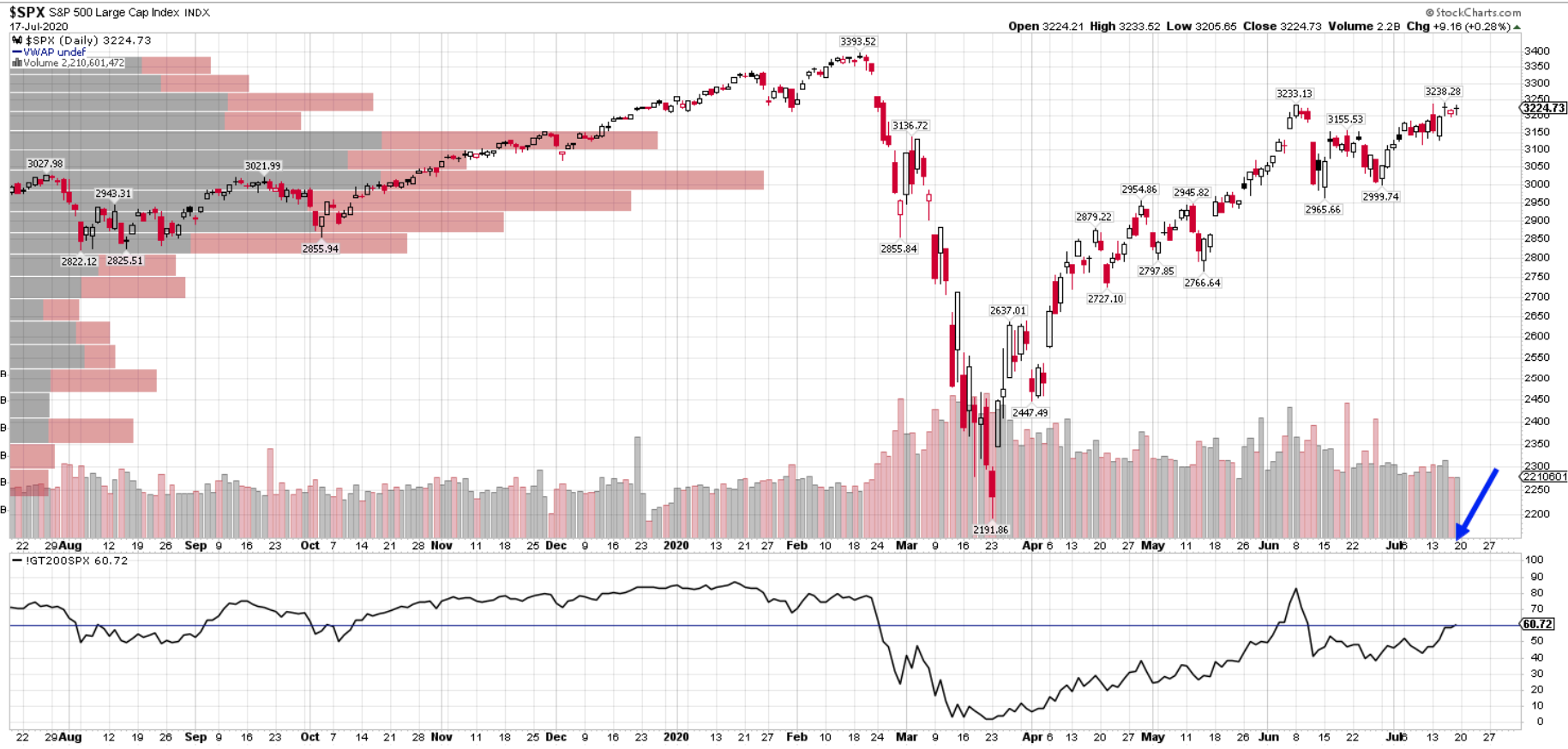


DRAWDOWN ANALYSIS
 3,6 AND 12-MONTH PERIODS



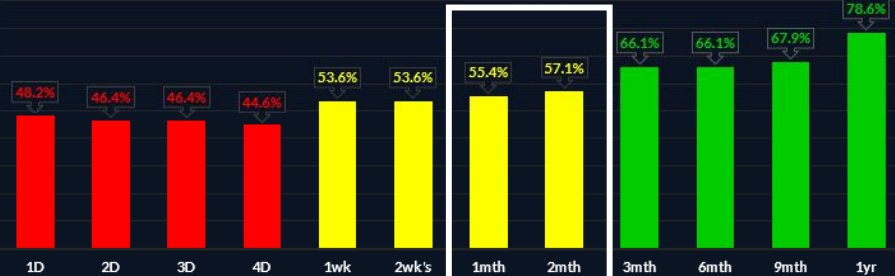
S&P 500 % STOCKS ABOVE THE 200-DAY EMA

HISTORICAL PRICE ANALYSIS

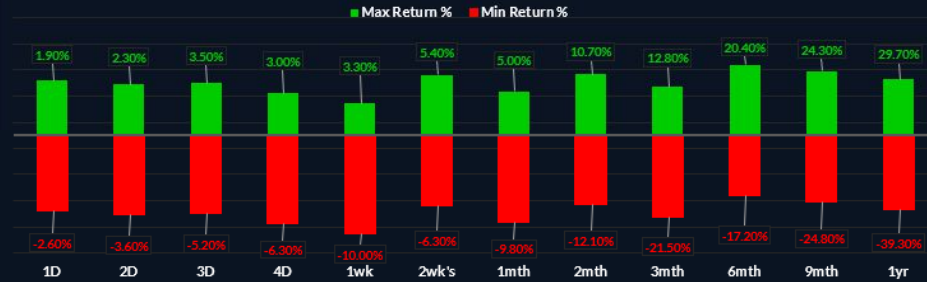




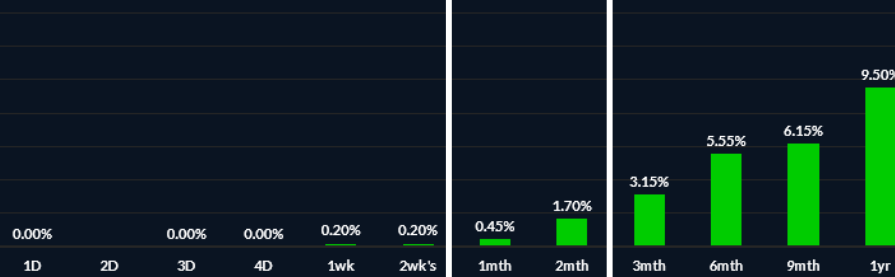
PERCENT POSITIVE CASES
 1-DAY TO 1-YEAR FOLLOWING THE ORIGINAL SIGNAL



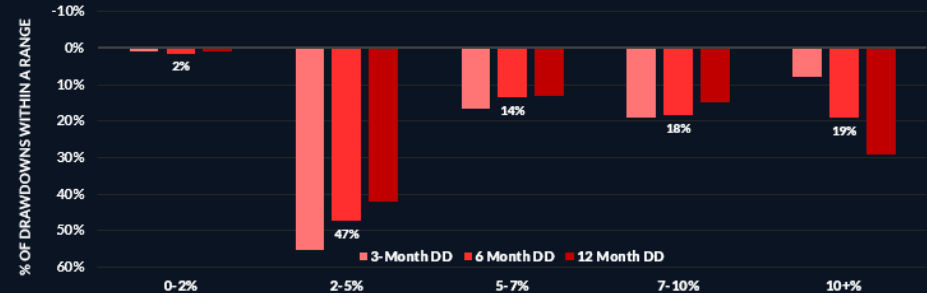
MIN / MAX RETURNS
 1-DAY TO 1-YEAR FOLLOWING THE ORIGINAL SIGNAL



AVERAGE RETURN ANALYSIS
 1-DAY TO 1-YEAR FOLLOWING THE ORIGINAL SIGNAL



DRAWDOWN ANALYSIS
 3,6 AND 12-MONTH PERIODS



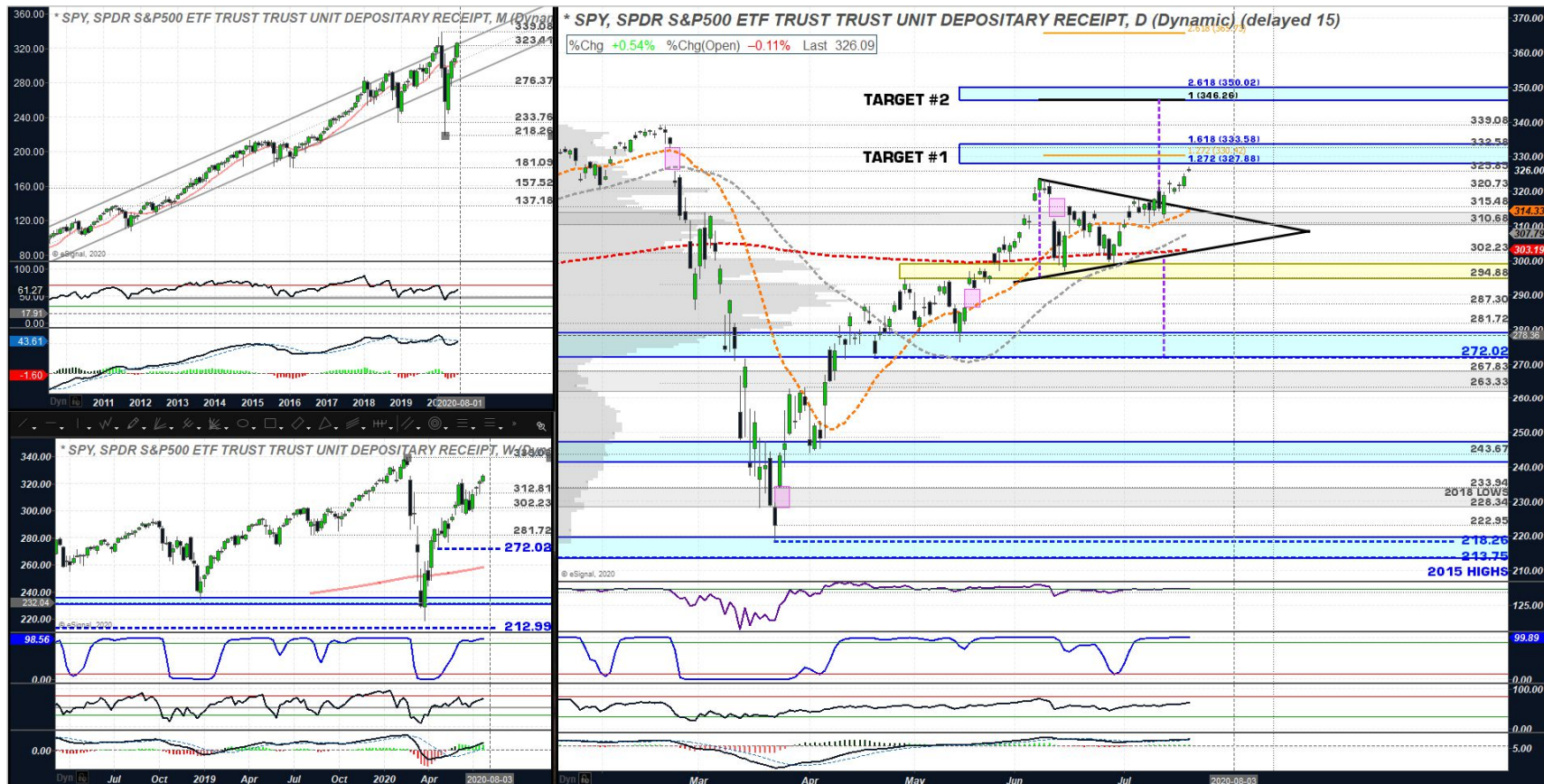


TECHNICAL ANALYSIS

- ❖ S&P 500 LARGE CAP INDEX ETF (SPY);
- ❖ CBOE VOLATILITY INDEX (\$VIX);
- ❖ S&P 500 LARGE CAP INDEX ETF (SPY) vs LT. TREASURIES (TLT);

S&P 500 LARGE CAP INDEX (\$SPX)

TECHNICAL ANALYSIS



SYMBOL	SPY
DATE	2020-07-20
DIV.YLD (%)	1.85
YTD%	0.76
RELATIVE VALUE	16
VOLATILITY (SHORT TERM)	1.70
TREND FILTER (TF)	100
LONG TERM RELATIVE STRENGTH (LT RS)	70
PRICE MOMENTUM TRACKING (PMT)	40
TECHNICAL RANK (TR)	95
MARKET TEMPERATURE GAGE	85
MMR	78

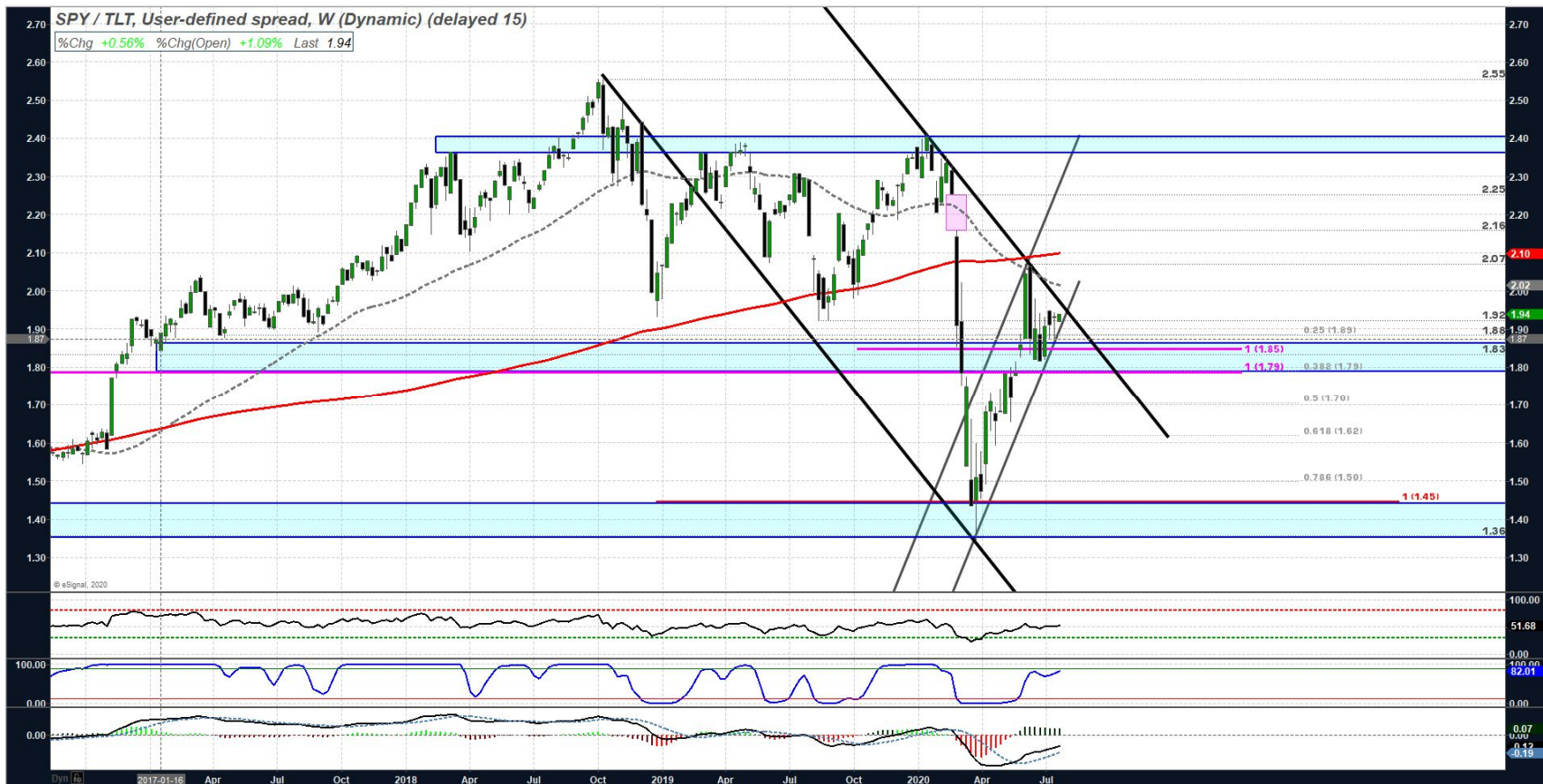
CBOE VOLATILITY INDEX (\$VIX)

TECHNICAL ANALYSIS



OFFENSE VS DEFENSE

S&P 500 LARGE CAP INDEX ETF (SPY) vs LT. TREASURIES (TLT) - WEEKLY RATIO ANALYSIS



US BOND ETF's vs CDN BOND ETF's

CORRELATION MATRIX

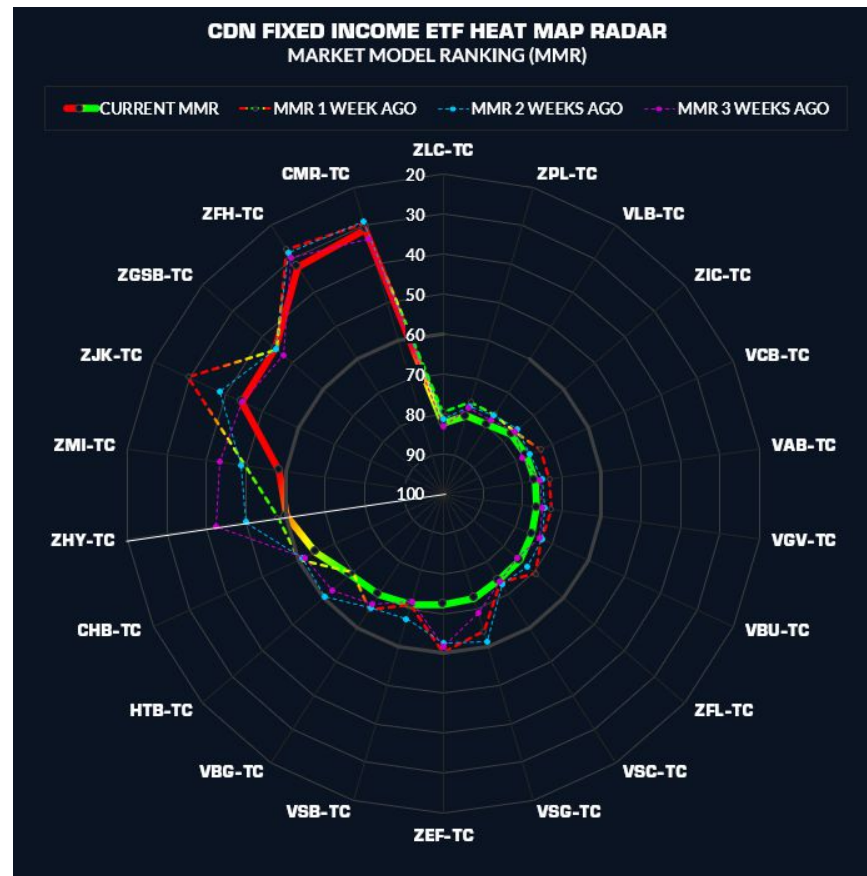
Ticker	Date/Time	Full name	Group	LQD	YTD %	HYG	EMB	TIP	LQD	VMBS	FLOT	IEF	TLT	DBC	BNDX	BIL
HTB-TC	2020-07-17	Horizons US 7-10 Year Treasury Bond ETF	Fixed Income	1241.65	16.47	-0.88	-0.83	0.7	0.1	0.76	-0.62	0.97	0.97	-0.98	-0.54	0.45
ZFL-TC	2020-07-17	BMO Long Federal Bond Index ETF	Fixed Income	91294.75	14.19	-0.63	-0.51	0.81	0.41	0.78	-0.32	0.93	0.92	-0.84	-0.2	0.35
VLB-TC	2020-07-17	Vanguard Canadian Long-Term Bond Index ETF	Fixed Income	5043.35	10.64	0.03	0.16	0.72	0.79	0.58	0.32	0.5	0.48	-0.3	0.28	-0.09
ZPL-TC	2020-07-17	BMO Long Provincial Bond Index ETF	Fixed Income	5007.35	10.56	0.01	0.14	0.66	0.73	0.52	0.26	0.49	0.48	-0.3	0.28	-0.05
FLB-TC	2020-07-17	CI First Asset Long Duration Fixed Income ETF	Fixed Income	400.55	10.35	-0.29	-0.18	0.75	0.6	0.67	-0.01	0.72	0.7	-0.58	0.03	0.11
XLB-TC	2020-07-17	iShares Core Canadian Long Term Bond Index ETF	Fixed Income	21007.05	9.98	0.2	0.31	0.66	0.84	0.53	0.48	0.38	0.36	-0.15	0.39	-0.19
ZIC-TC	2020-07-17	BMO Mid-Term US IG Corporate Bond Index ETF	Fixed Income	4042.35	9.73	-0.26	-0.2	0.86	0.76	0.83	0.1	0.77	0.74	-0.61	-0.03	0
HTH-TC	2020-07-17	Horizons US 7-10 Year Treasury Bond CAD Hedged ETF	Fixed Income	1784.55	9.34	-0.78	-0.71	0.8	0.28	0.83	-0.5	0.99	0.98	-0.95	-0.45	0.39
MKB-TC	2020-07-17	Mackenzie Core Plus Canadian Fixed Income ETF	Fixed Income	16861.65	8.77	-0.19	-0.08	0.81	0.76	0.75	0.16	0.7	0.67	-0.52	0.1	0.04
HAD-TC	2020-07-17	Horizons Active Cdn Bond ETF	Fixed Income	3503	8.61	0.11	0.18	0.73	0.87	0.69	0.47	0.46	0.43	-0.26	0.26	-0.19
ZFM-TC	2020-07-17	BMO Mid Federal Bond Index ETF	Fixed Income	3730	8.36	-0.7	-0.63	0.8	0.33	0.81	-0.4	0.96	0.94	-0.91	-0.29	0.4
HBB-TC	2020-07-17	Horizons Cdn Select Universe Bond ETF	Fixed Income	8777.6	8.02	-0.28	-0.17	0.86	0.71	0.78	0.05	0.75	0.72	-0.6	-0.05	0.05
ZGB-TC	2020-07-17	BMO Government Bond Index ETF	Fixed Income	4477.75	7.78	-0.51	-0.4	0.81	0.5	0.76	-0.22	0.88	0.85	-0.77	-0.12	0.27
VGX-TC	2020-07-17	Vanguard Canadian Government Bond Index ETF	Fixed Income	6398.45	7.47	-0.45	-0.34	0.83	0.56	0.77	-0.14	0.85	0.83	-0.73	-0.07	0.24
ZDB-TC	2020-07-17	BMO Discount Bond Index ETF	Fixed Income	15249.55	7.35	-0.06	0.04	0.82	0.8	0.73	0.3	0.6	0.57	-0.41	0.16	-0.08
XGB-TC	2020-07-17	iShares Canadian Government Bond Index ETF	Fixed Income	21565.25	7.3	-0.47	-0.36	0.82	0.54	0.76	-0.16	0.86	0.84	-0.74	-0.09	0.24
ZMP-TC	2020-07-17	BMO Mid Provincial Bond Index ETF	Fixed Income	13425.35	7.13	-0.48	-0.39	0.85	0.55	0.81	-0.14	0.88	0.85	-0.77	-0.11	0.24
XRB-TC	2020-07-17	iShares Canadian Real Return Bond Index ETF	Fixed Income	14411.7	7.04	0.51	0.6	0.42	0.79	0.29	0.72	0.02	0.01	0.19	0.58	-0.37



CDN FIXED INCOME ETF RADAR

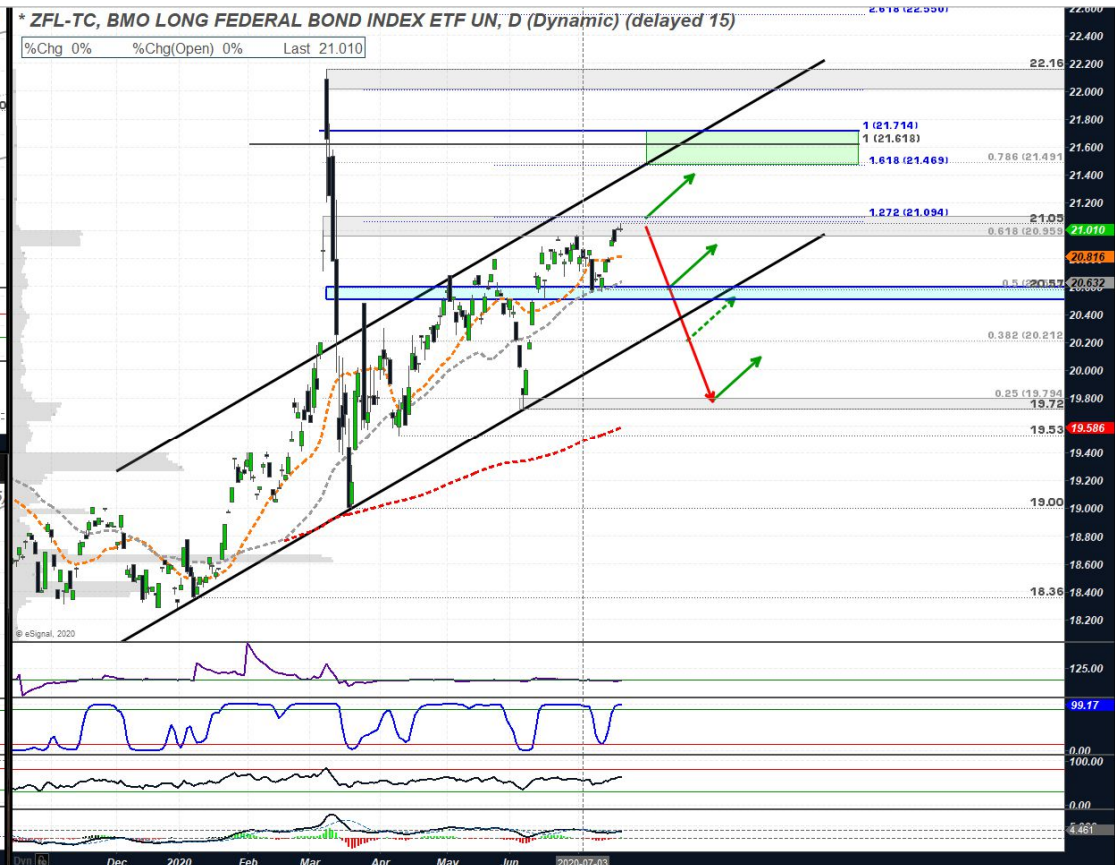
MARKET MODEL RANKINGS (MMR)

Symbol	Date	Posture	Description	MMR_0	MMR_5	MMR_10	MMR_15	MMR_20
ZLC-TC	2020-07-20	Defensive	BMO Long Corporate Bond Index ETF	82	79	81	83	78
VLB-TC	2020-07-20	Defensive	Vanguard Canadian Long-Term Bond Index ETF	80	76	77	78	74
ZPL-TC	2020-07-20	Defensive	BMO Long Provincial Bond Index ETF	80	76	77	78	74
VCB-TC	2020-07-20	Defensive	Vanguard Canadian Corporate Bond Index ETF	77	73	76	78	75
ZIC-TC	2020-07-20	Defensive	BMO Mid-Term US IG Corporate Bond Index ETF	77	76	75	76	73
VAB-TC	2020-07-20	Defensive	Vanguard Canadian Aggregate Bond Index ETF	77	73	75	76	72
VGY-TC	2020-07-20	Defensive	Vanguard Canadian Government Bond Index ETF	76	73	74	75	72
VSC-TC	2020-07-20	Defensive	Vanguard Canadian Short-Term Corporate Bond Index ETF	74	74	73	74	71
ZFL-TC	2020-07-20	Defensive	BMO Long Federal Bond Index ETF	75	69	72	75	72
VBU-TC	2020-07-20	Defensive	Vanguard U.S. Aggregate Bond Index ETF (CAD-hedged)	76	73	73	73	70
ZEF-TC	2020-07-20	Defensive	BMO Emerging Markets Bond Hedged to CAD Index ETF	72	60	63	62	59
VSG-TC	2020-07-20	Defensive	Vanguard Canadian Short-Term Government Bond Index ETF	73	64	61	69	67
VSB-TC	2020-07-20	Defensive	Vanguard Canadian Short-Term Bond Index ETF	71	71	67	72	67
HTB-TC	2020-07-20	Defensive	Horizons US 7-10 Year Treasury Bond ETF	69	70	61	63	59
VBG-TC	2020-07-20	Defensive	Vanguard Global ex-U.S. Aggregate Bond Index ETF (CAD-hedged)	70	66	66	67	53
CHB-TC	2020-07-20	Defensive	iShares U.S. High Yield Fixed Income Index ETF (CAD-Hedged)	65	60	61	62	62
ZHY-TC	2020-07-20	Defensive	BMO High Yield US Corporate Bond Hedged to CAD Index ETF	60	58	50	43	49
ZMI-TC	2020-07-20	Defensive	BMO Monthly Income ETF	59	50	49	43	44
ZGSB-TC	2020-07-20	Defensive	BMO Global Strategic Bond Fund	44	45	45	47	43
ZJK-TC	2020-07-20	Defensive	BMO High Yield US Corporate Bond Index ETF	44	30	38	44	41
CMR-TC	2020-07-20	Defensive	iShares Premium Money Market ETF	31	30	29	34	30
ZFH-TC	2020-07-20	Defensive	BMO Floating Rate High Yield ETF	32	27	28	30	36



BMO LONG FEDERAL BOND INDEX ETF (ZFL-TC)

TECHNICAL ANALYSIS



SYMBOL	ZFL-TC
DATE	2020-07-20
DIV_YLD (%)	2.52
YTD%	14.68
RELATIVE VALUE	32
VOLATILITY (SHORT TERM)	0.63
TREND FILTER (TF)	100
LONG TERM RELATIVE STRENGTH (LT RS)	92
PRICE MOMENTUM TRACKING (PMT)	6
TECHNICAL RANK (TR)	90
MARKET TEMPERATURE GAGE	85
MMR	74.7

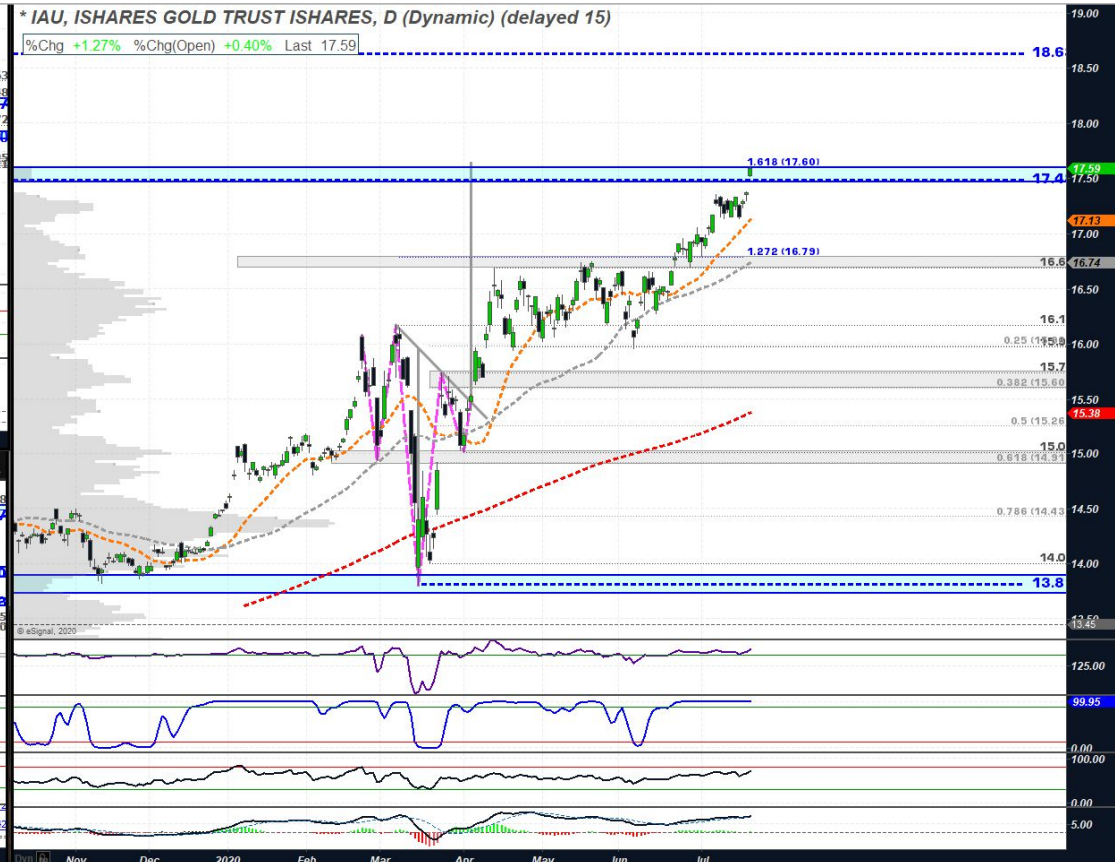
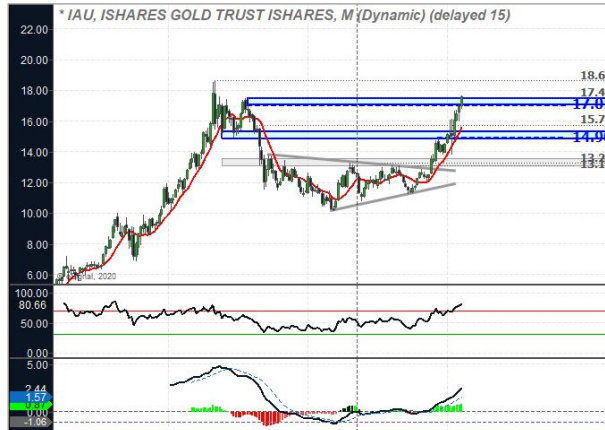


PRECIOUS METALS AND MINERS

- ❖ **ISHARES GOLD TRUST ETF (IAU);**
- ❖ **ISHARES GOLD BULLION ETF HEDGED (CGL-TC);**
- ❖ **ISHARES S&P/TSX GLOBAL GOLD MINERS ETF (XGD-TC);**
- ❖ **ISHARES SILVER TRUST ETF (SLV);**
- ❖ **ISHARES SILVER BULLION ETF HEDGED TO CAD (SVR-TC);**

ISHARES GOLD TRUST ETF (IAU)

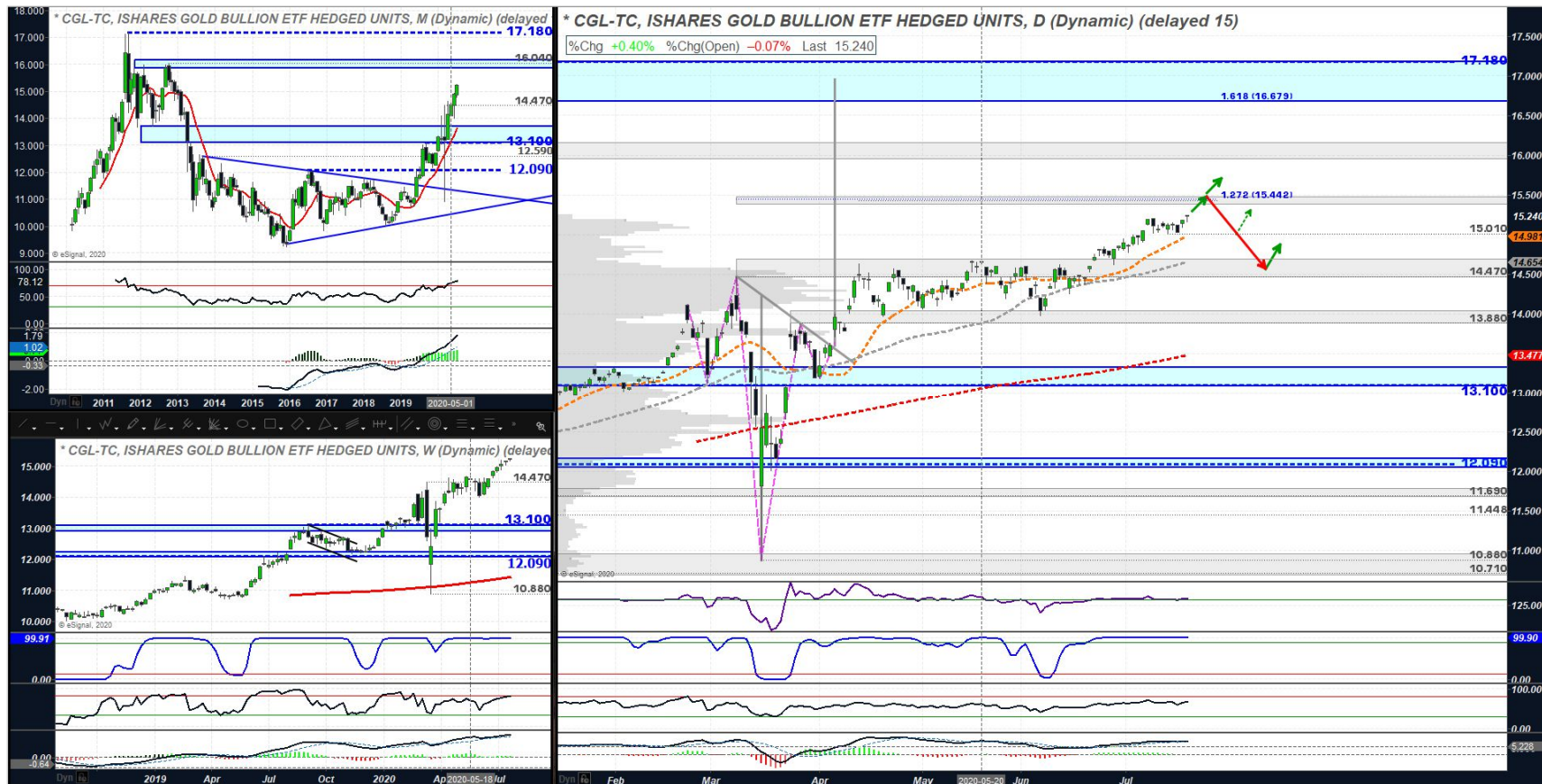
TECHNICAL ANALYSIS



SYMBOL	IAU
DATE	2020-07-20
DIV_YLD (%)	17.13
YTD%	19.79
RELATIVE VALUE	33
VOLATILITY (SHORT TERM)	0.95
TREND FILTER (TF)	100
LONG TERM RELATIVE STRENGTH (LT RS)	94
PRICE MOMENTUM TRACKING (PMT)	12
TECHNICAL RANK (TR)	100
MARKET TEMPERATURE GAGE	85
MMR	78

ISHARES GOLD BULLION ETF HEDGED (CGL-TC)

TECHNICAL ANALYSIS



SYMBOL	CGL-TC
DATE	2020-07-20
DIV.YLD (%)	14.981
YTD%	19.72
RELATIVE VALUE	36
VOLATILITY (SHORT TERM)	0.92
TREND FILTER (TF)	100
LONG TERM RELATIVE STRENGTH (LT RS)	96
PRICE MOMENTUM TRACKING (PMT)	16
TECHNICAL RANK (TR)	100
MARKET TEMPERATURE GAGE	85
MMR	79.4



RIVERSIDE POSTS

TSX GOLD MINERS

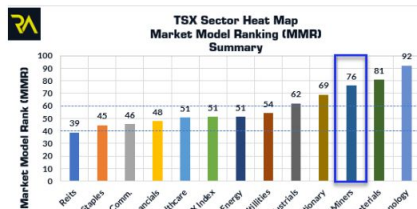
HOME - GENERAL OVERVIEW - PUBLIC BLOG - MEMBERS ONLY - MASTER CLASS - SIGN UP - CONTACT US - FAQ

2020-06-11 – TSX Gold Miners May Be On the Move Again

11 Jun

2020-06-11 – TSX Gold Miners May Be On the Move Again

Our proprietary Heat Map continues to track the strength of TSX Gold Miners. Currently, the Gold Miners ETF (XGD-TC) produces Market Model Ranking (MMR) of 76 which is in excess of the TSX Index MMR of 51 as shown below;



Riverside Analytics Inc @RiversideAnalyt · Jul 20

TSX Gold Miners ETF (XGD-TC) looking bullish heading into August. Cup and handle suggests more upside ahead. TBD.



2

3

4



BASIC PORTFOLIO COMPOSITION

FINDING THE RIGHT FIT AND COMPOSITION

If Gold Miners were a consideration for your portfolio, where and how would they fit into your portfolio??

CASH

Cash is a position.

REAL ESTATE

Hard Assets, Equity, Mortgage Reits

COMMODITIES

Oil, Gold, Silver, Platinum, Palladium, etc



NORTH AMERICAN EQUITIES

TSX, S&P 500, Nasdaq, Dow Jones Industrial Average, etc

GLOBAL EQUITIES

All World, EAFE, Emerging Markets, Specific Countries

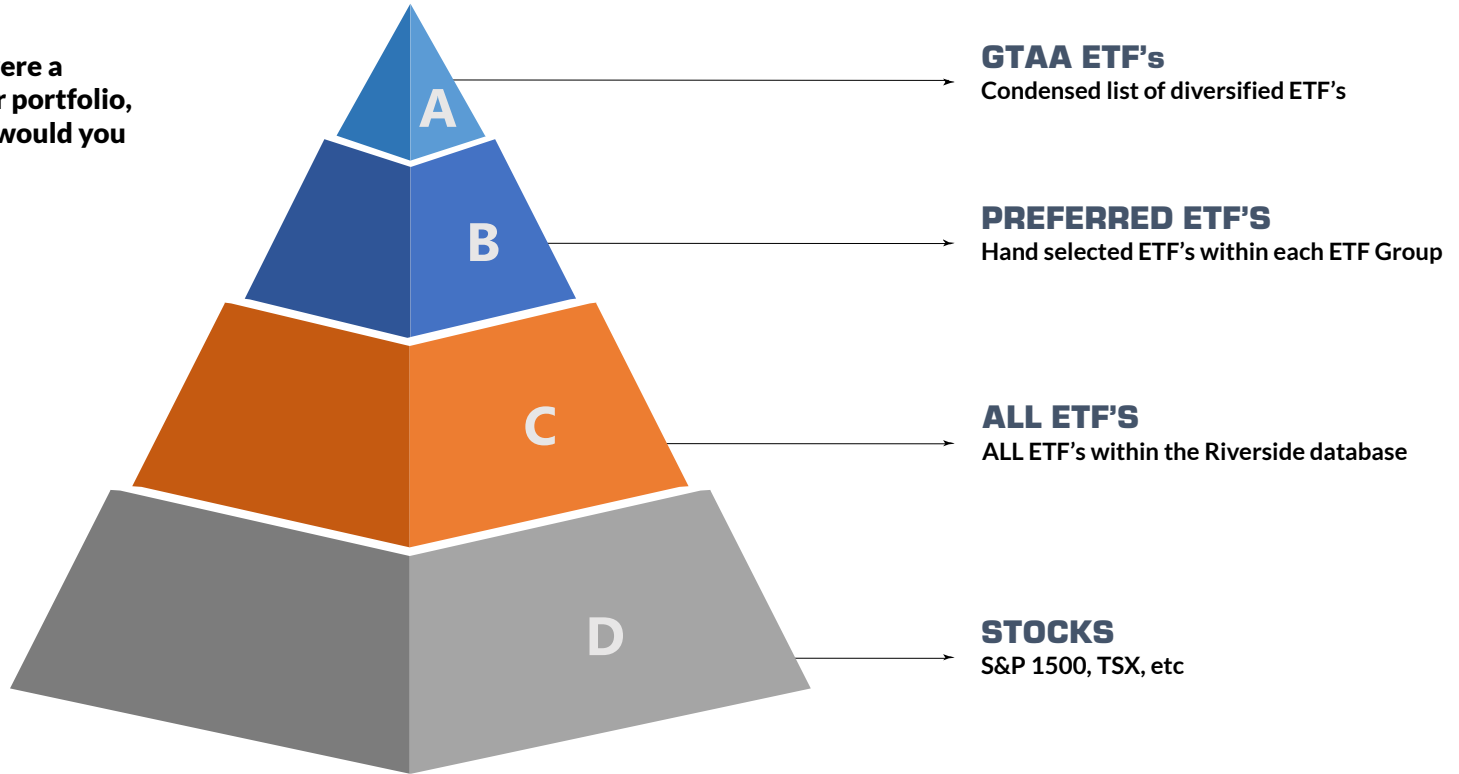
FIXED INCOME

Long, Mid, Short Term Federal, Provincial, Corporate, High Yield, etc

UNIVERSE OF ASSETS

SIMPLE TO COMPLEX

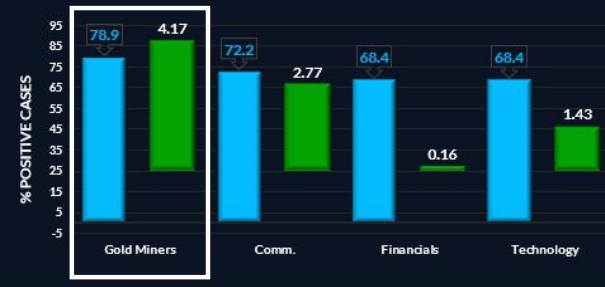
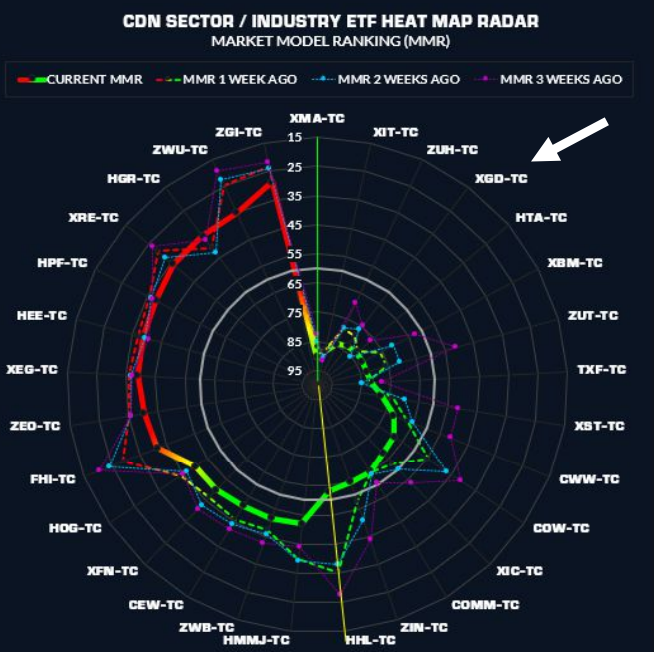
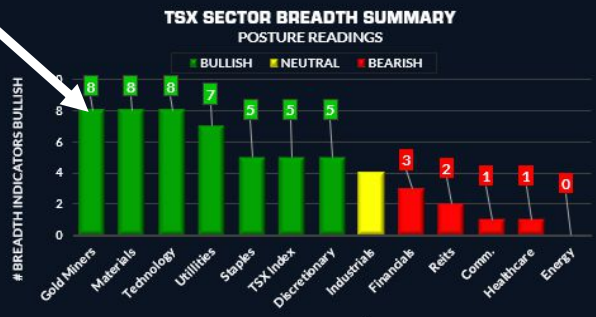
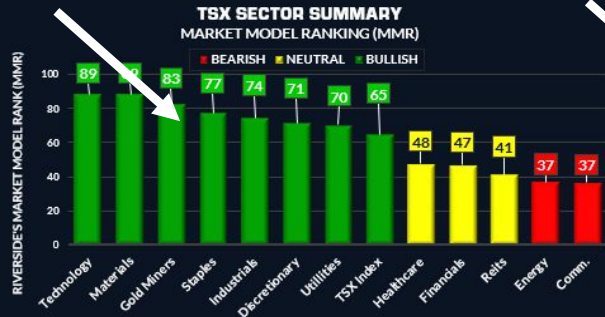
If Gold Miners were a consideration for your portfolio, what asset bucket(s) would you consider?





RIVERSIDE'S TSX SECTOR / INDUSTRY GROUP ANALYSIS DASHBOARD

MMR RANKING, BREADTH, VALUE, VOLATILITY, MOVEMENT DETECTION AND SEASONALITY



GOLD ETF's

CDN ETF ALL - HEAT MAP

CDN ETF ALL HEAT MAP - SEARCH FOR "GOLD" IN THE DESCRIPTION COLUMN

BASIC TICKER INFORMATION														MARKET MODEL RANK					
Rank ALL ETF's	Rank ALL ETF's by Sub Category	Rank Preferred ETF's by Sub Category	ETF Main Category	ETF Sub Category	ETF Sub Category Preferred ETF's Only	Symbol	Date	Posture	Description	GROUP ID	Filter Preferred ETF_List	Filter GTAA ETF_List	DIY (%)	YTD%	MMR_0	MMR_5	MMR_10	MMR_15	MMR_20
1	1	1	5	5100		ZJG-TC	2020-07-20	Defensive	BMO Junior Gold Index ETF	Industry				37.08	94	91	91	89	84
3	3	1	5	5100		CGXF-TC	2020-07-20	Defensive	CI First Asset Gold+ Giants Covered Call ETF	Industry			6.13	24.55	91	86	83	77	64
4	4	1	5	5100		HEP-TC	2020-07-20	Defensive	Horizons Enhanced Income Gold Producers ETF	Industry			4.64	26.84	90	86	82	80	69
1	1	1	5	5200		ZGD-TC	2020-07-20	Defensive	BMO Equal Weight Global Gold Index ETF	Industry				42.00	94	91	89	85	74
2	2	1	5	5200	5100	XGD-TC	2020-07-20	Defensive	iShares S&P/TSX Global Gold Index ETF	Industry	1		0.13	43.83	83	79	76	75	66
4	4	4	8	8100	8100	CGL-TC	2020-07-20	Defensive	iShares Gold Bullion ETF	Commodities	1	1		19.72	79	78	76	76	72
6	6	6	8	8100	8100	HGY-TC	2020-07-20	Defensive	Horizons Gold Yield ETF	Commodities	1		4.33	12.97	75	74	72	72	71
5	5	5	8	8100	8100	HUG-TC	2020-07-20	Defensive	Horizons Gold ETF	Commodities	1			17.17	77	75	75	75	71
5	5	3	10	10100		HGD-TC	2020-07-20	Defensive	BetaPro Canadian Gold Miners -2x Daily Bear ETF	Inverse_Leveraged				-45.29	39	39	43	44	63
9	9	3	10	10100		HBD-TC	2020-07-20	Defensive	BetaPro Gold Bullion -2x Daily Bear ETF	Inverse_Leveraged				-34.52	21	19	19	19	16
2	2	1	10	10200		HGU-TC	2020-07-20	Defensive	BetaPro Canadian Gold Miners 2x Daily Bull ETF	Inverse_Leveraged				81.55	94	90	85	76	65
5	5	1	10	10200		HBU-TC	2020-07-20	Defensive	BetaPro Gold Bullion 2x Daily Bull ETF	Inverse_Leveraged				32.43	80	77	77	76	72

PRECIOUS METALS ETF'S

UNDERSTANDING RISK

US ETF's

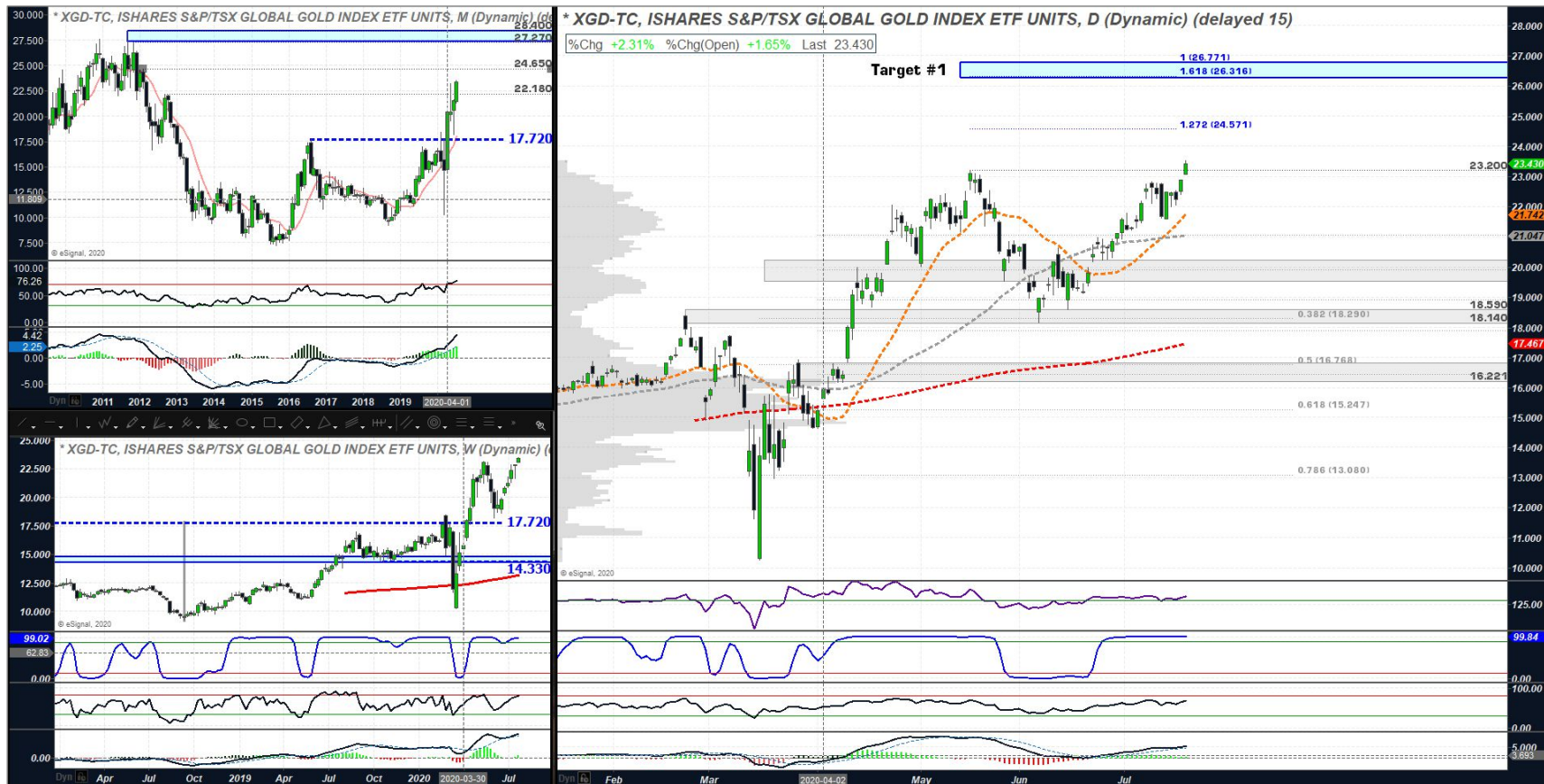
Symbol	Beta (2-yr)	VLT
SPY	1	1.7
GLD	0.01	0.92
SLV	0.24	2.08
GLTR	0.16	1.24
TLT	-0.32	1.03
GDX	0.16	3.23

CAD ETF's

Symbol	Beta (2-yr)	VLT
XIC-TC	1.00	1.39
CGL-TC	0.06	0.92
SVR-TC	0.32	1.96
XMA-TC	0.57	2.27
ZFL-TC	-0.12	0.63
XGD-TC	0.24	3.00

ISHARES S&P/TSX GLOBAL GOLD MINERS ETF (XGD-TC)

TECHNICAL ANALYSIS

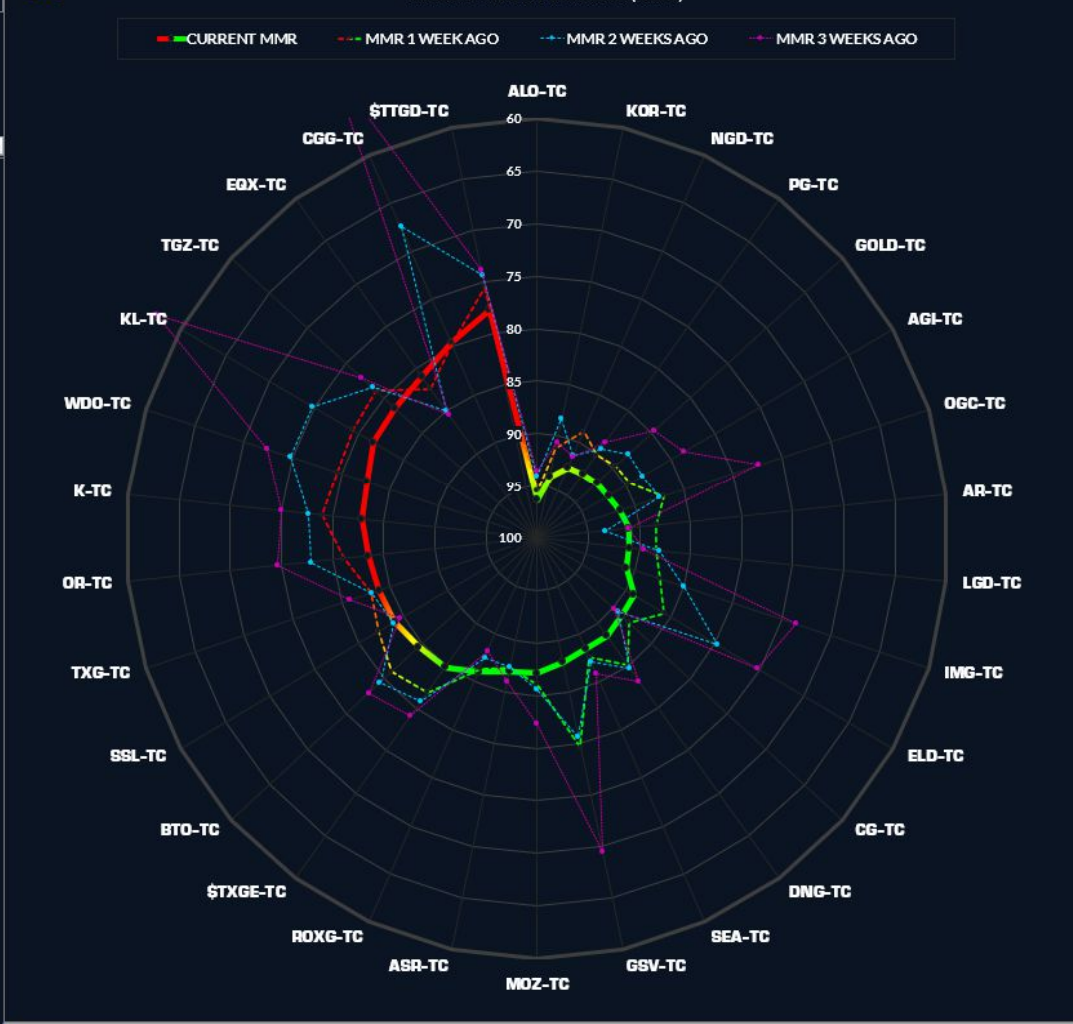


SYMBOL	XGD-TC
DATE	2020-07-20
DIV.YLD (%)	0.13
YTD%	43.83
RELATIVE VALUE	67
VOLATILITY (SHORT TERM)	3.00
TREND FILTER (TF)	100
LONG TERM RELATIVE STRENGTH (LT RS)	93
PRICE MOMENTUM TRACKING (PMT)	32
TECHNICAL RANK (TR)	100
MARKET TEMPERATURE GAGE	85
MMR	83.1

TSX - TOP 30 - GOLD MINER STOCKS - HEAT MAP RADAR
MARKET MODEL RANKING (MMR)

Rank	Symbol	CAP	Description	MMR_0	MMR_5	MMR_10	MMR_15	MMR_20
1	ALD-TC	SML	Alio Gold Inc	96	95	94	94	86
2	KOR-TC	SML	Corvus Gold Inc	94	91	89	91	87
6	NGD-TC	SML	New Gold Inc	93	89	91	91	83
7	PG-TC	SML	Premier Gold Mines Ltd	92	90	89	89	82
8	GOLD-TC	SML	GoldMining Inc	92	90	88	85	78
3	AGI-TC	MID	Alamos Gold Inc	92	90	88	83	76
11	OGC-TC	SML	OceanaGold Corp	91	87	89	77	73
4	AR-TC	SML	Argonaut Gold Ltd	91	89	93	91	83
5	LGD-TC	SML	Liberty Gold Corp	91	88	88	80	85
9	IMG-TC	MID	IAMGold Corp	91	87	85	73	58
14	ELD-TC	SML	Eldorado Gold Corp	89	86	80	75	63
12	CGG-TC	MID	Centerra Gold Inc	89	88	89	80	87
17	DNG-TC	SML	Dynacor Gold Mines Inc	88	85	85	83	79
10	SEA-TC	SML	Seabridge Gold Inc	88	89	87	85	83
27	GSV-TC	SML	Gold Standard Ventures Corp	88	89	81	70	57
15	MOZ-TC	SML	Marathon Gold Corp	87	86	86	82	77
13	ASR-TC	SML	Alacer Gold Corp	87	87	87	86	80
16	ROXG-TC	SML	Roxgold Inc	86	86	87	86	83
19	\$TXGE-TC	3_INDUSTRY	S&P/TSX EQUAL WEIGHT GLOBAL GOLD INDEX	85	82	81	79	72
21	BTO-TC	MID	B2Gold Corp	84	81	79	79	72
18	SSL-TC	SML	Sandstorm Gold Ltd	84	82	84	85	80
23	TXG-TC	SML	Torex Gold Resources Inc	84	83	83	81	73
22	OR-TC	SML	Osisko Gold Royalties Ltd	83	81	78	75	61
25	K-TC	MID	Kinross Gold Corp	83	79	79	75	67
24	WDD-TC	SML	Westdome Gold Mines Ltd	83	80	75	72	61
28	KL-TC	LRG	Kirkland Lake Gold Ltd	82	79	75	57	46
26	TGZ-TC	SML	Teranga Gold Corp	81	79	78	77	73
20	EQX-TC	SML	Equinox Gold Corp	81	82	85	85	81
30	CGG-TC	SML	China Gold International Resources Corp Ltd	80	80	67	51	45
29	\$TTGD-TC	3_INDUSTRY	S&P/TSX CANADIAN GOLD INDEX	78	76	74	74	65

TSX TOP 30 GOLD MINER STOCKS - HEAT MAP RADAR
MARKET MODEL RANKING (MMR)

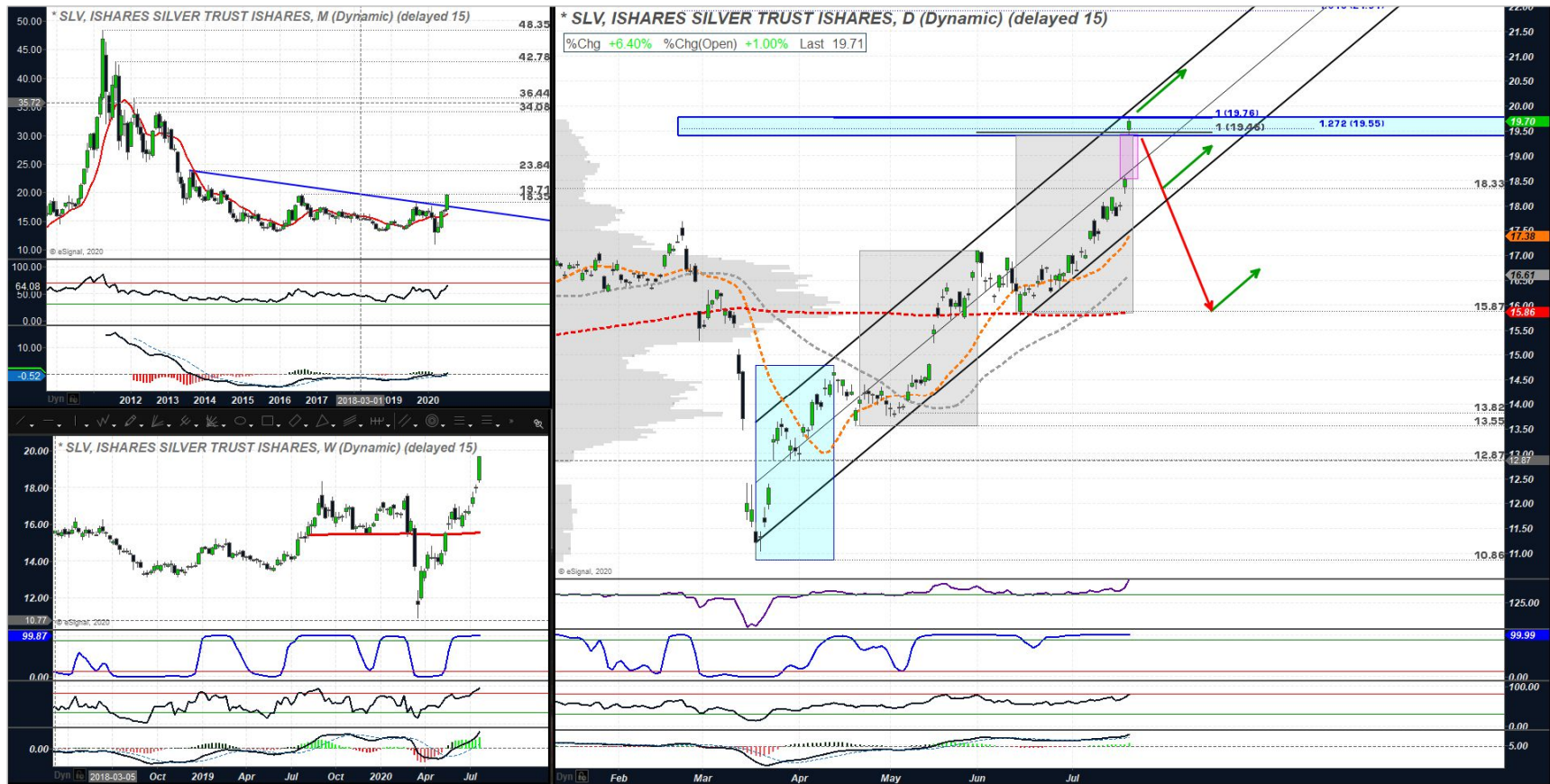


WHAT ABOUT SILVER???

TWITTER POST – JULY 9, 2020



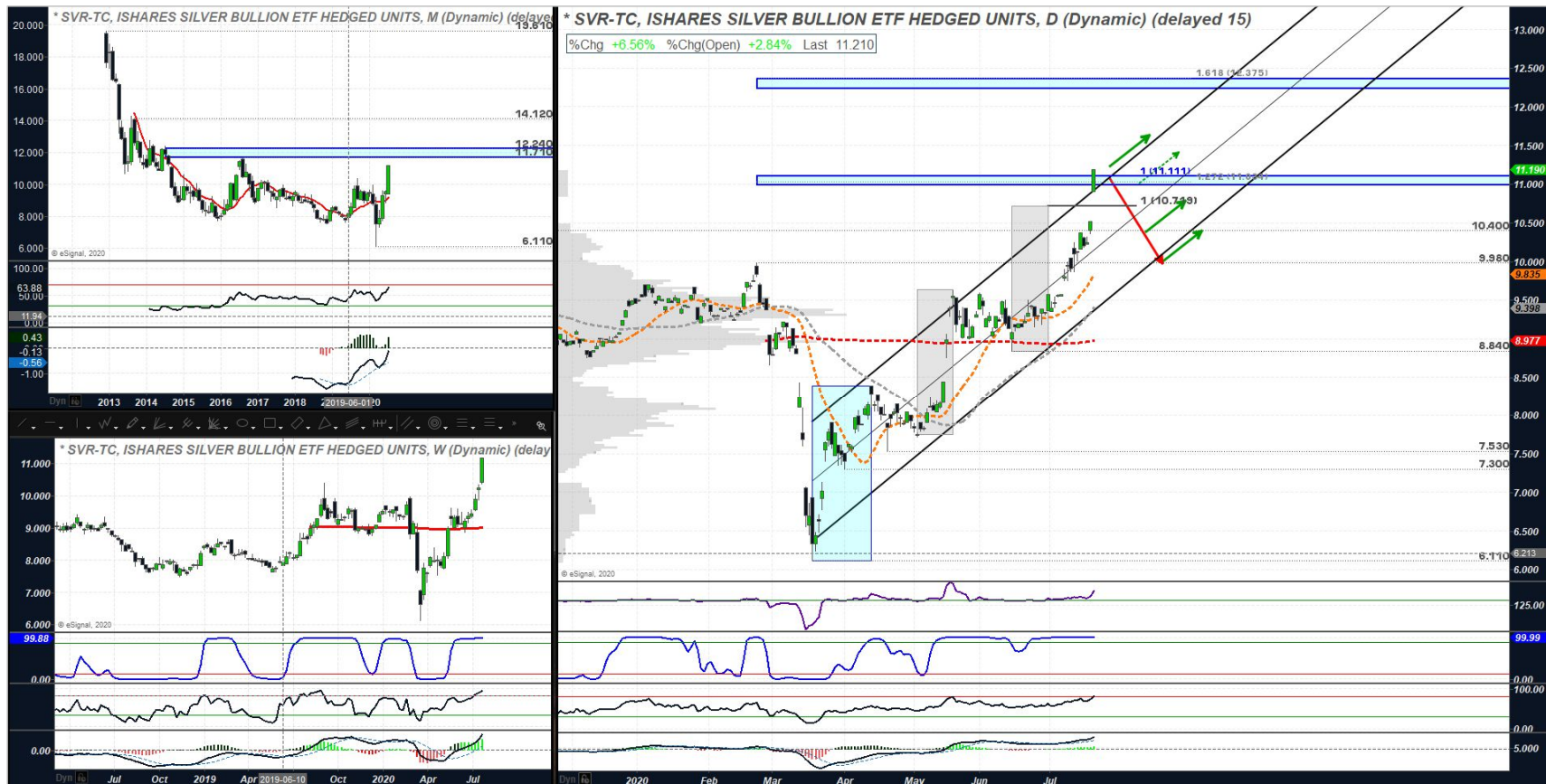
ISHARES SILVER TRUST ETF (SLV) TECHNICAL ANALYSIS



SYMBOL	SLV
DATE	2020-07-20
DIV_YLD (%)	
YTD%	11.09
RELATIVE VALUE	97
VOLATILITY (SHORT TERM)	2.08
TREND FILTER (TF)	100
LONG TERM RELATIVE STRENGTH (LT RS)	94
PRICE MOMENTUM TRACKING (PMT)	81
TECHNICAL RANK (TR)	100
MARKET TEMPERATURE GAGE	85
MMR	92

ISHARES SILVER BULLION ETF HEDGED TO CAD (SVR-TC)

TECHNICAL ANALYSIS



SYMBOL	SVR-TC
DATE	2020-07-20
DIV_YLD (%)	
YTD%	11.32
RELATIVE VALUE	104
VOLATILITY (SHORT TERM)	1.96
TREND FILTER (TF)	100
LONG TERM RELATIVE STRENGTH (LT RS)	95
PRICE MOMENTUM TRACKING (PMT)	94
TECHNICAL RANK (TR)	100
MARKET TEMPERATURE GAGE	85
MMR	94.9





PRODUCT OFFERINGS

- ❖ **INVESTOR MASTER CLASS;**
- ❖ **STANDARD MEMBERSHIP;**
- ❖ **PREMIUM MARKET BREADTH;**
- ❖ **SEASONALITY PROFIT EXPLORER;**
- ❖ **ULTIMATE MEMBERSHIP;**

RIVERSIDE'S PRODUCT OFFERINGS

TONIGHT IS THE LAST OPEN HOUSE FOR THE SUMMER!

[HOME](#) ▾ [GENERAL OVERVIEW](#) ▾ [PUBLIC BLOG](#) [MEMBERS ONLY](#) ▾ [MASTER CLASS](#) [SIGN UP](#) ▾ [CONTACT US](#) [FAQ](#)

Sign Up to Access Riverside Content

RIVERSIDE PRODUCT OFFERINGS

Currently at Riverside we have three product offerings available with many more on the way. Click on any of the live links below to register for our services;

- [Riverside's Standard Membership](#) – Annual and Quarterly options available;
- [Riverside's Investors Master Class](#);
- [Riverside's Premium Market Breadth Membership](#) – Annual and Quarterly options available;
- [Riverside's Seasonal Profit Explorer \(SPE\) Membership](#) – Annual and Quarterly options available;
- [Riverside's Ultimate Membership](#) – Annual and Quarterly options available;



THAT'S IT FOR TODAY!



TERMS OF SERVICE

RIVERSIDE ANALYTICS INC

SLIDE DECK

TERMS AND CONDITIONS – GENERAL

These terms and conditions govern your use of this slide deck. By accessing this slide deck, you are acknowledging and accepting these terms of use. These terms of use are subject to change by Riverside Analytics Inc. (hereinafter referred to simply as “Riverside Analytics”) at any time and at our discretion without notice. Your use of this slide deck after any changes are implemented constitutes your acceptance of the changes. As a result, we encourage you to consult the terms and conditions each time you use this slide deck.

INTELLECTUAL PROPERTY

You acknowledge and agree that all content and materials available on this slide deck are protected by copyrights, trademarks, service marks, patents, trade secrets, or other proprietary rights and laws. Except as expressly authorized by Riverside Analytics, you agree not to sell, license, rent, modify, distribute, copy, reproduce, transmit, publicly display, publicly perform, publish, adapt, edit, or create derivative works from such materials or content.

As noted above, reproduction, copying, or redistribution for commercial purposes of any materials or design elements on this slide deck is strictly prohibited without the express written permission of Riverside Analytics. For information on requesting such permission, please contact us at tim.koen@riversideanalyticsinc.com

INVESTMENT ADVICE

Riverside Analytics provides data as an information service and does not recommend buying, selling and holding various stocks and other securities. Riverside Analytics, its employees or its directors are not a registered financial advisers and do not provide investment advice or recommendations directed to any particular subscriber or in view of the particular circumstances of any particular person.

